

# Operating Instructions

## Series D9000 Spring Driven Hose Reels

For Diesel Exhaust Fluid (DEF)

[URD9200 OLBBW](#)

[URD9275 OLBBW70](#)

[UR9300 OLBBW70](#)

[URD9275 OLBBW](#)

[URD9300 OLBBW](#)

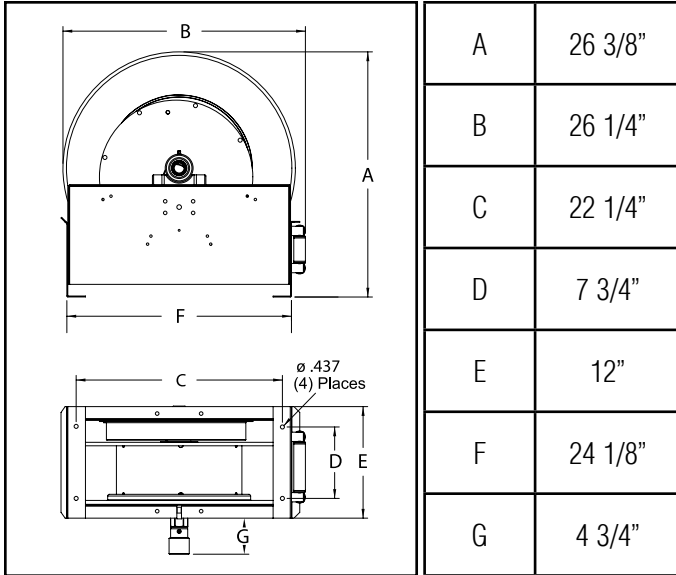
[UR9350 OLBBW70](#)

[URD9200 OLBBW70](#)

[URD9350 OLBBW](#)



### Dimensions



### SAFETY

1. Do not use reel at higher pressures or temperatures than listed on the back of this bulletin.
2. Remove all spring tension before beginning disassembly process.
3. Reel spring motor case is permanently sealed. Any attempt to remove the spring motor may cause serious injury.

### INSTALLATION:

The swivel union is packed separately in the reel carton, use teflon tape to assure a satisfactory seal. A flexible hose connection must be used between the hose reel inlet and the source of supply to prevent possible misalignment and binding. Non flexible connections will void the warranty, pressure rating of inlet hose must be equal to or more than the pressure rating of the reel. Consult factory for proper spring when installing reels above 16 ft.

### LUBRICATION:

Hose reel spring and bearings are factory lubricated and require no further lubrication.

### REPLACING HOSE:

1. Wind spool flange clockwise-facing swivel-until spring is tight.
2. Back off three turns and latch.
3. Insert hose through roller guide.
4. Connect hose fitting to female outlet ell.

### ADJUSTMENTS:

To adjust spring tension, add or remove wraps of hose from the spool, one wrap at a time until desired tension is obtained.

### REPAIRS:

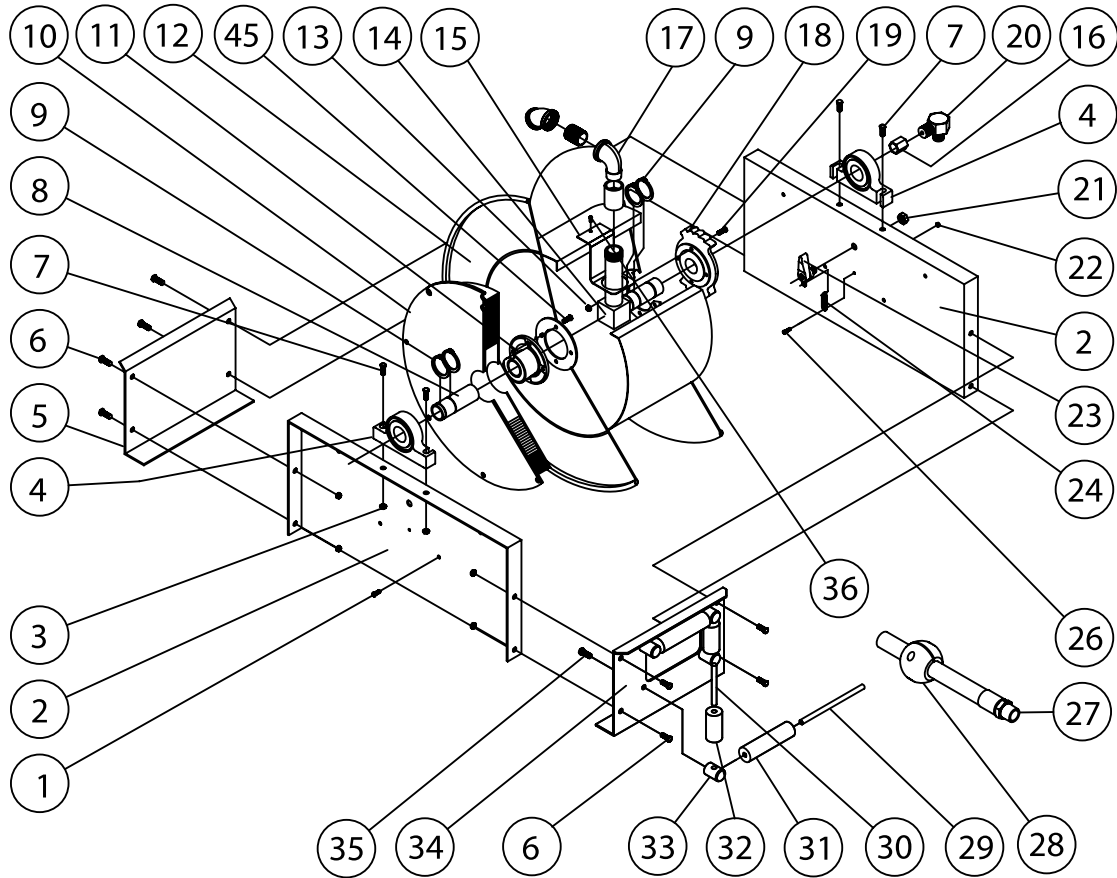
Extensive repairs should be performed only by an authorized serviceman or factory to avoid damage which may void your warranty. Remove all spring tension before beginning disassembly process.

### MODIFICATION:

Hose latching mechanism can be removed for constant tension applications.

Form# 1234-1011 Rev: 5/2018

# Series D9000 Spring Driven Hose Reels



Item #	Part #	# Req	Description	Item #	Part #	# Req	Description
1	S2-41	4	1/4-20 x 1/2" Hex Screw	18	S270001	1	Latch Ratchet Hub
2	270009	2	Side Frame	19	S2-42	4	1/4-20 x 5/8" Hex Screw
3	S281-6	12	3/8-16 Hex Flange Nut	21	S280-8	1	1/2-20 x 5/8" Hex Screw
4	S270058	2	Pillow Block	22	S82-16	1	Nut, Nyloc
5	270012	1	End Frame Support	23	S600018	1	Latch Pawl Assembly
6	S44-2	8	3/8-16 x 5/8" Screw	24	S260067	1	Latch Spring
7	S44-8	4	3/8-16 x 1-3/4" Screw	26	S393-2	1	10-32 Shoulder Screw
8	602314	1	Support Shaft	29	S270016	2	Guide Roller Pin - Long
9	S140-31	5	Snap Ring	30	S270015	2	Guide Roller Pin - Short
10	S270105	1	Spring & Case Assembly	31	262436-5.468	2	Guide Roller
11	S270002	1	Spring Arbor	32	262436-2.968	2	Guide Roller
12	270107	1	Sheave Assembly	33	S270014	4	Guide Roller Post
13	S281-4	8	1/4-20 Hex Flange Nut	34	270011	1	Hose Guide Roller Plate
14	261047	1	Inlet Tube	35	S2-51	4	5/16"-18x1/2" Hex Screw
15	270029	1	Hose Outlet Support	36	S32-136	1	#10 x 3/8" Self Tap Screw
17	S160-16	1	90° Elbow				

Item #	Description	# Req	URD9200 OLBBW	URD9275 OLBBW	URD9200 OLBBW70	URD9275 OLBBW70	URD9300 OLBBW	URD9350 OLBBW	URD9300 OLBBW70	URD9350 OLBBW70
16	Reducer Bushing	1	S175-113	S175-113	S380-112	S380-112	S175-113	S175-113	S380-113	S380-113
20	Swivel Assembly	1	600374-2	600374-2	602218-2	602218-2	600348-2	600348-2	602472-2	602472-2
27	Hose Assembly	1	None	601107-75	None	601101-75	None	601106-50	None	601105-50
28	Bumper Stop	1	None	3-HR1005	3-HR1005	3-HR1005	None	3-HR1005	3-HR1005	3-HR1005