



# **FILL-RITE** **DEF** TM

**DEF / ADBLUE<sup>®</sup>**  
**PUMP SYSTEMS & ACCESSORIES**  
**FROM THE LEADER IN FUEL TRANSFER**

 **Tuthill**  
PUMP YOUR HEART INTO IT



DF Series / DEF Dispensing Pump Systems

The new DF Series DEF pumps and systems from Fill-Rite provide quick, easy, and safe dispensing. With 8 GPM flow rates, your choice of AC or DC power, and all-in-one systems ready to go right out of the box, pumping Diesel Exhaust Fluid has never been easier.

Whether you pump from an IBC, tote, or drum, there is a DF series system for you.

Options include mounting brackets, hoses, fittings, and nozzles with digital meters pre-attached at the factory. Best of all, it comes from Fill-Rite, so you know it is built for performance and durability. Take control of your DEF use; choose a DF Series system from Fill-Rite, the most trusted name in pumps and meters.



Pump Features & Benefits

- **Rugged Multi-Diaphragm Technology** - Specifically designed for DEF / AdBlue® dispensing
- **Integral Pulsation Dampener** - Smooth flow at point of use
- **30-Minute Duty Cycle** - 120V AC or 12V DC
- **Self-Priming to 6 Feet** - Saves time with quick fluid lift
- **8 GPM Flow Rate** - Ideal dispense rate for most tank sizes
- **EPDM Seals** - Designed, tested and proven specifically for DEF
- **Stainless Steel Exterior Hardware** - Ideal material for DEF / AdBlue®



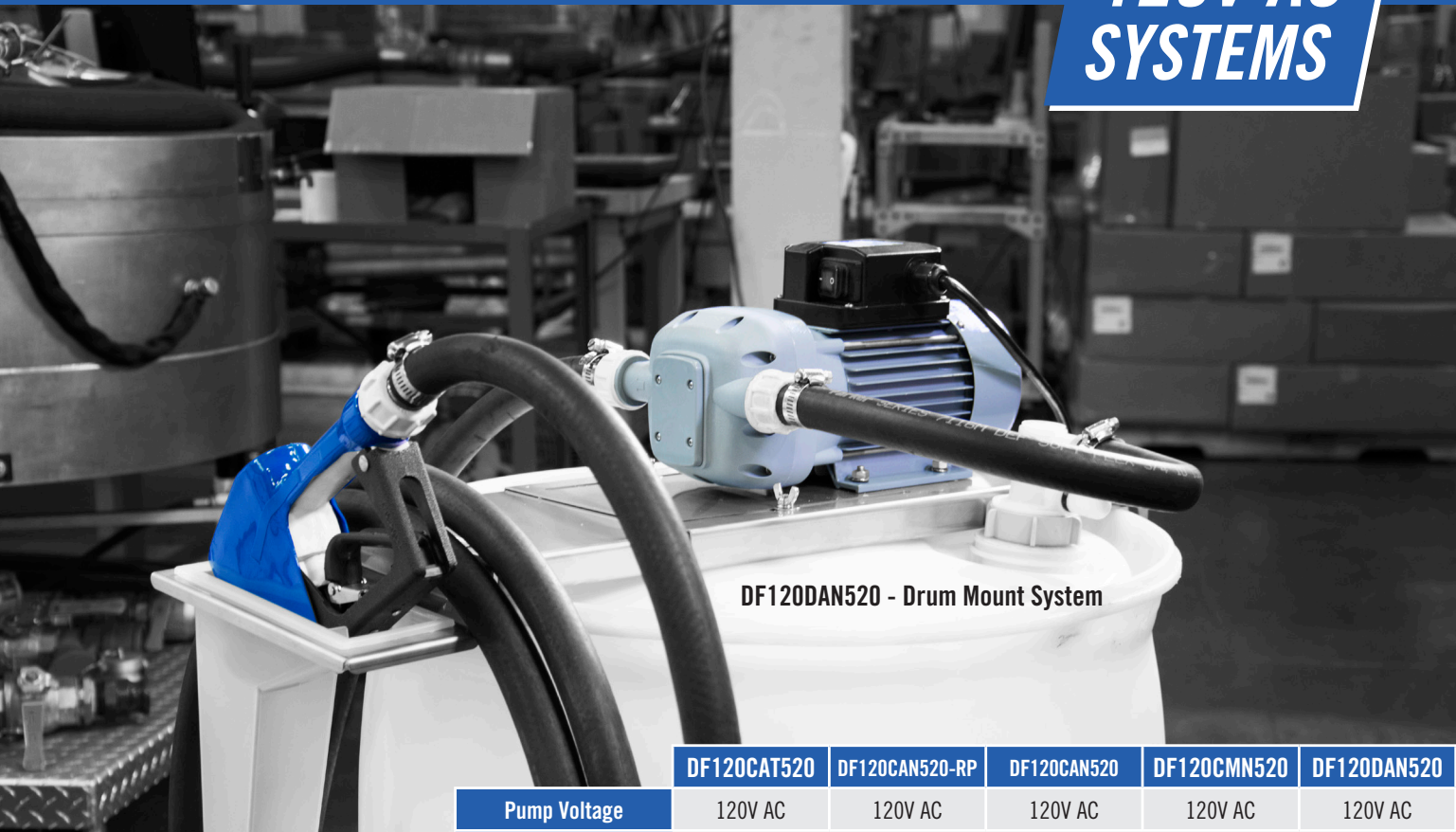
	DF120N	DF012N
Flow Rate	8 gpm / 30 lpm	
Max. Bypass	38 psi / 2.6 bar	
Voltage	120V AC	12V DC
Wetted Construction	Nylon, EPDM, Santoprene®, Stainless Steel	
Duty Cycle	30 Min. ON / 30 Min. OFF	
Compatible Fluids	Water, Diesel Exhaust Fluid	
Inlet / Outlet	1" BSPP	
Connections Kit (included)	(2) 1" BSPP x 3/4" hose barb 90° elbows, (2) 1" BSPP x 3/4" hose barb straight fittings, (4) Worm gear hose clamps	

12V DC  
DF012N

2 YEAR WARRANTY  
ON ALL MODELS



120V AC  
SYSTEMS



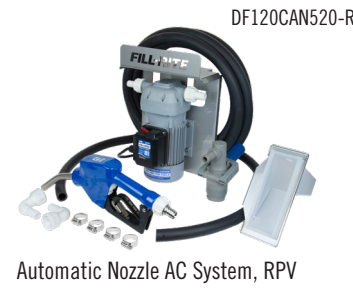
DF120DAN520 - Drum Mount System

	DF120CAT520	DF120CAN520-RP	DF120CAN520	DF120CMN520	DF120DAN520
Pump Voltage	120V AC	120V AC	120V AC	120V AC	120V AC
Bracket Type	Cage IBC	Cage IBC	Cage IBC	Cage IBC	Drum
Nozzle Boot & Bracket	Included	Included	Included	Included	Included
Turbine Meter	TT10PB	-	-	-	-
Nozzle Type	Automatic	Automatic	Automatic	Manual	Automatic
Micro Matic® RPV	Included	Included	-	-	-
5' Suction Hose	Included	Included	Included	Included	Included
20' Discharge Hose	Included	Included	Included	Included	Included
Connections	(2) 1" BSPP x ¾" hose barb 90° elbows, (2) 1" BSPP x ¾" hose barb straight fittings, (4) Worm gear hose clamps				



DF120CAT520

Auto Nozzle AC System, In-line Meter, RPV



DF120CAN520-RP

Automatic Nozzle AC System, RPV



DF120CAN520

Automatic Nozzle AC System



DF120CMN520

Manual Nozzle AC System



DF120DAN520

Drum Mount AC System, Auto Nozzle

System Component Details

- Cage Bracket**
- Stainless steel
  - Hangs on many types of caged totes
  - High capacity hose bracket accommodates 20'

- Drum Bracket (DF120DAN520 only)**
- Stainless steel
  - Securely mounts to 30 and 55-gallon drums

- Nozzle Boot**
- Keeps nozzle clean and free of debris
  - Nozzle tip submerged in water stays clean
  - Removable boot for easy clean-up
  - Multiple secure mounting configurations

- Hose**
- ¾" EPDM DEF rated

- Nozzle**
- Automatic or manual

- Turbine Meter (CAT520 models only)**
- +/- 1% accuracy
  - 4-Digit display: ounces, pints, quarts, liters or gallons
  - Factory calibrated, installed and tested
  - Easy field calibration
  - Replaceable AA batteries

- Micro Matic® Composite Dispense Coupler (RPV)**  
(CAT520 and CAN520-RP models only)
- Dispense from drum or IBC
  - For use with either RSV or RPV 4-Key Container Valve
  - Fast "Turn, Click and Go" connections
  - Self-locking handle eliminates accidental disengagement
  - Protects fluid purity by allowing dispense only

12V DC  
SYSTEMS



DF120CAT520 - Cage Mount System with Nozzle, Meter, and RPV

	DF012CAT520	DF012CAN520-RP	DF012CAN520	DF012CMN520
Pump Voltage	12V DC	12V DC	12V DC	12V DC
Bracket Type	Cage IBC	Cage IBC	Cage IBC	Cage IBC
Nozzle Boot & Bracket	Included	Included	Included	Included
Turbine Meter	TT10PB	-	-	-
Nozzle Type	Automatic	Automatic	Automatic	Manual
Micro Matic® RPV	Included	-	Included	-
5' Suction Hose	Included	Included	Included	Included
20' Discharge Hose	Included	Included	Included	Included
Connections	(2) 1" BSPP x ¾" hose barb 90° elbows, (2) 1" BSPP x ¾" hose barb straight fittings, (4) Worm gear hose clamps			



DF012CAT520

Auto Nozzle DC System, In-line Meter, RPV



DF012CAN520-RP

Automatic Nozzle DC System, RPV



DF012CAN520

Automatic Nozzle DC System



DF012CMN520

Manual Nozzle DC System



DF Series / DEF Accessories



FRDFA075A

- Automatic DEF nozzle
- Stainless Steel
- 3/4" BSPP connection



KITDFMN

- DEF Automatic metering nozzle
- In-line turbine meter
- 3/4" SS Hose barb connection w/ swivel



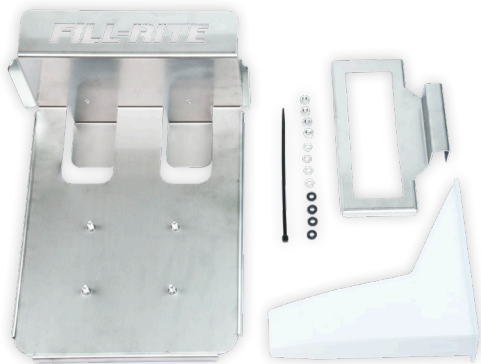
FRDFM075C

- Manual DEF nozzle
- Non-metallic
- 3/4" Hose barb connection



FRDFM075B

- Automatic DEF nozzle
- Non-metallic
- 3/4" SS Hose barb connection w/ swivel



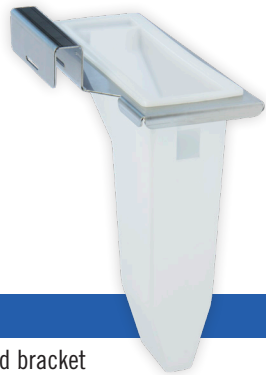
KITDFCB

- FILL-RITE IBC/Tote bracket
- Stainless Steel construction including hardware
- Includes nozzle boot and reservoir



KITDFDB

- FILL-RITE Drum bracket
- Stainless Steel construction expands for 30 to 55 gallon drums
- Includes nozzle boot and bracket



KITDFNB

- Nozzle boot and bracket
- Removable boot for easy clean-up
- Keeps nozzle clean and free of debris



MMNM075RPV

- Micro Matic® Non-metallic, RPV coupler
- 3/4" Horizontal hose barb connection
- For use with either RSV or RPV 4-key container valves



KIT180DTPS

- 55 Gallon drum drop tube
- 3/4" Horizontal hose barb connection
- Vented system



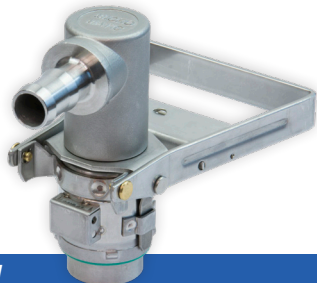
KITDFH05

- 5' EPDM suction hose 3/4 inch
- Bare ends for hose barb connection
- DEF rated



MMSS075EPV

- Micro Matic® Stainless Steel, EPV coupler
- 3/4" Horizontal hose barb connection
- For use with 3-key EPV container valves



MMSS075RSV

- Micro Matic® Stainless Steel, RSV coupler
- 3/4" Horizontal hose barb connection
- For use with either RSV or RPV 4-key container valves



KITDFH20

- 20' EPDM suction hose 3/4 inch
- Bare ends for hose barb connection
- DEF rated



KITDFFK

- (2) 1" BSPP x 3/4" Hose Barb strait fittings with retaining nuts
- (2) 1" BSPP x 3/4" Hose Barb 90-degree elbow fittings with retaining nuts
- (4) SS worm gear hose clamps



# **FILL-RITE** **DEF** <sup>TM</sup>

*[fillrite.com/def](http://fillrite.com/def)*

 **Tuthill**  
PUMP YOUR HEART INTO IT

8825 Aviation Drive  
Fort Wayne, Indiana 46809  
(800) 634-2695 or (260) 747-7524  
UK +44 115 944 6774

FRDEFSB