

## OPW Conquistador™ Plus Composite Cover Manholes

Lightweight and extremely durable, composite cover manholes make sump accessibility safer and easier than ever before. Designed for use in many service station, commercial and industrial driveway applications, these manholes offer a wide variety of features to ensure the ultimate in user-friendly convenience and long-lasting performance.

The Conquistador™ Duratuff® helps put an end to the risk of back, foot and hand injuries with a slip-resistant tread pattern and lightweight, low-profile construction for easier and safer access to tank sumps and other underground equipment.



### Replacement Parts

Product #	Description
<b>New Recessed Handle Replacement Parts</b>	
205749	Handle
203174	Screw
<b>Recessed Handle Replacement Parts</b>	
RPHK	Replacement Handle Kit
H13439M	Handle
H13441M	Weld Nut
H14462M	Screw
H11620M	Washer
<b>Key-Lift Kit Replacement Parts</b>	
203541	Keylift
203569	Screw
<b>Key-Lift Kit 2 Replacement Parts</b>	
RPKLK	Replacement Key-Lift Kit
D02677M	Key Lift Plate
H13441M	Weld Nut
H14463M	Screw



### Features

- ◆ Slip-resistant tread pattern
- ◆ Easy removal and replacement
- ◆ Two lifting options; stainless steel recessed handle or key-lift provision
- ◆ Reduced risk of back, foot and hand injuries
- ◆ Unmatched deflection performance
- ◆ Outstanding long-term durability in rigorous cycle tests
- ◆ Three mounting options
- ◆ Unique structural fiberglass reinforcement matrix
- ◆ Water-resistant models available
- ◆ Roto-Lock and Bolt-down models available
- ◆ Interchangeable with other manufacturers' covers
- ◆ Painted ring and brass bolts help to prevent rust and corrosion
- ◆ Ribbed gasket peel and stick design for easy replacement
- ◆ Roto-Lock Models – for securing a raintight connection without the need to locate threaded bolt holes on the mounting ring. The Roto-Lock offers quick and easy access, while maintaining a secure sump application.
- ◆ H20 Rating – Exceeds Highway Specification - 20 (H20) Rating.

### Lifting Options



NEW Recessed Handle  
203666



Recessed Handle  
RPHK



Key-Lift  
203541



Key-Lift  
RPKLK

Key-Lift Provision (90K-KLS Stick Not Included)

### Replacement Handles and Keylifts by Model Year

Item	Part #	Conquistador Model Years	Description
Replacement Handle	RPHK	2000-2008	2 Thru Hole Bolt Pattern Design Handle
Replacement Handle	203666	2009-Present	2 Threaded Hole Bolt Pattern Design Handle
Replacement Keylift	RPKLK	2000-2008	4 Thru Hole Bolt Pattern Design Keylift
Replacement Keylift	203667	2009-Present	2 Threaded Hole Bolt Pattern Design Keylift

## Materials

**Cover:** Fiberglass  
**Ring:** Painted steel  
**Skirt:** Galvanized steel  
**Key Lift / Recessed Handles:** Stainless steel  
**Bolts:** Stainless steel  
**Roto-lock:** Brass



## Dimensions

Cover	A (Ring I.D.)		B (Skirt I.D.)		Cover Wt.		Assembly Wt.	
39 <sup>1</sup> / <sub>2</sub> "	36 <sup>1</sup> / <sub>8</sub> "	92 cm	38 <sup>5</sup> / <sub>8</sub> "	98 cm	76 lbs.	34.4 kg	134 lbs.	60.8 kg
44 <sup>1</sup> / <sub>4</sub> "	40 <sup>29</sup> / <sub>32</sub> "	104 cm	43 <sup>3</sup> / <sub>8</sub> "	110 cm	89 lbs.	40.4 kg	163 lbs.	74 kg

## Ordering Specifications

### Plain Cover-Grey

Product #	Description	Cover Only
39CD-PL10	39 <sup>1</sup> / <sub>2</sub> " Plain Cover w/Recess Handle	E00618
39CD-PLKL	39 <sup>1</sup> / <sub>2</sub> " Plain Cover w/Key-Lift Provision	E00620
44CD-PL10	44 <sup>1</sup> / <sub>4</sub> " Plain Cover w/Recess Handle	E00626
44CD-PLKL	44 <sup>1</sup> / <sub>4</sub> " Plain Cover w/Key-Lift Provision	E00628

### Bolt-Down Cover-Grey

Product #	Description	Cover Only
39CD-WT10	39 <sup>1</sup> / <sub>2</sub> " Bolt Down Cover w/Recess Handle	E00622
39CD-WTKL	39 <sup>1</sup> / <sub>2</sub> " Bolt Down w/Key-Lift Provision	E00624
44CD-WT10	44 <sup>1</sup> / <sub>4</sub> " Bolt Down Cover w/Recess Handle	E00630
44CD-WTKL	44 <sup>1</sup> / <sub>4</sub> " Bolt Down w/Key-Lift Provision	E00632

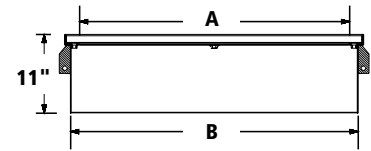
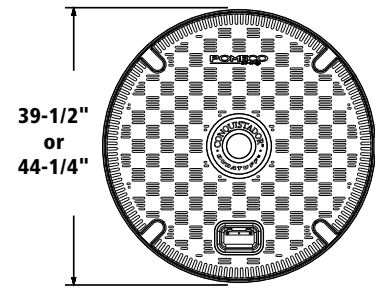
### Roto-Lock Cover-Grey

Product #	Description	Cover Only
39CD-RL10	39 <sup>1</sup> / <sub>2</sub> " Roto-Lock w/Recess Handle	E00714
39CD-RLKL	39 <sup>1</sup> / <sub>2</sub> " Roto-Lock w/Key-Lift Provision	E00715
44CD-RL10	44 <sup>1</sup> / <sub>4</sub> " Roto-Lock w/Recess Handle	E00713
44CD-RLKL	44 <sup>1</sup> / <sub>4</sub> " Roto-Lock w/Key-Lift Provision	E00712

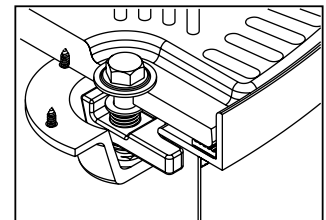
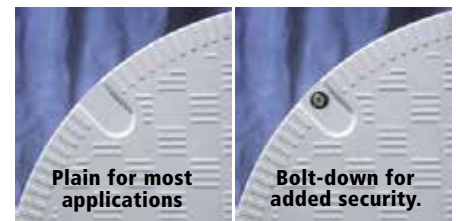
### Steel Cover Only

Product #	Description
P110-3950L	39 <sup>1</sup> / <sub>2</sub> " Plain Cover Only
P110-4425L	44 <sup>1</sup> / <sub>4</sub> " Plain Cover Only

## OPW Conquistador™ Plus Composite Cover Manholes

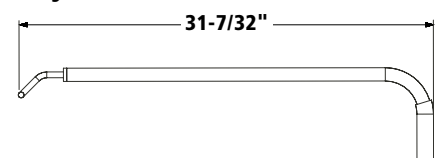


### Mounting Options:



Roto-Lock Fastening System

### Key Lift Provision Stick



### Replacement Parts

Product #	Description
90K-KLS	Key-Lift Provision Stick
H14858	Replacement Gasket for 39CD and 44CD
H14460M	Replacement Bolts
H14461M	Replacement Washers
1RL-KIT	Replacement Roto-Lock Kit