



GASBOY

SERIES 9820Q PARTS LIST

035091

Rev. 10/16/03

Copyright 2003 by Gasboy International LLC All rights reserved.

The information in this document is confidential and proprietary. No further disclosure shall be made without permission of Gasboy International LLC. Gasboy International LLC believes that the information in this document is accurate and reliable. However, we assume no responsibility for its use, nor for any infringements of patents or other rights of third parties resulting from its use. We reserve the right to make changes at any time without notice.

GASBOY INTERNATIONAL LLC LANSDALE, PA

IMPORTANT WARNINGS AND SAFEGUARDS

Gasoline and petroleum products are flammable. To avoid injury or death to persons or damage to equipment or property, follow these listed warnings and other warnings and precautions outlined in this manual when installing, using, or working around this equipment. Check with GASBOY Technical Services for compatibility of liquids with pump materials.

TURN OFF AND LOCK OUT ALL POWER TO PUMP BEFORE PERFORMING SERVICE, MAINTENANCE OR IN THE EVENT OF A FUEL SPILL.

All products must be installed by a qualified installer and used in conformance with all building, fire, and environmental codes and other safety requirements applicable to its installation and use, including, but not limited to, NFPA 30, NFPA 30A, NFPA 395 & NFPA 70. A qualified installer is familiar with fuel systems installations under the above stated building, fire, and environmental codes and other safety requirements for the particular type of installation.

This product is only part of a fuel dispensing system and additional equipment and accessories, such as, but not limited to, breakaway connectors, shear valves, pressure regulators, flow limiters, and other safety devices may be necessary to meet the applicable codes.

For maximum safety, we recommend that all employees be trained as to the location and procedure for turning off power to the entire system. Instructions regarding proper operation of the equipment along with the appropriate safety warnings should be posted in plain view at the fuel island.

Before performing service or maintenance (including changing of fuel filters or strainers) or in the event of a fuel spill, turn off and lock out all power to the system. In battery-powered pumps, disconnect power source. In submersible pump applications, turn off and lock out power at the master panel and close any impact valves to the submersible pump and any other dispensers which use that submersible pump. AC power can feed back into a shut-off dispenser when dispensers share a common submersible pump or starter relay. Also block islands so no vehicles can pull up to the dispenser when the dispenser is being worked on.

DO NOT use Teflon tape for any pipe threads in the product.

DO NOT use consumer pumps for pumping fuel or additives into aircraft.

DO NOT use commercial pumps for direct fueling of aircraft without filters and separators necessary to ensure product purity.

DO NOT use where sanitary design is required (for food products for human consumption) or with water-based liquids.

DO NOT smoke near the pump or when using the pump.

DO NOT use near open flame or electrical equipment which may ignite fumes.

DO NOT permit the dispensing of gasoline or other petroleum products into a vehicle with its motor running.

DO NOT permit the dispensing of gasoline or other petroleum products into unapproved containers or into approved containers in or on vehicles including trucks. All containers must be filled on the ground to prevent static discharge. Always use Approved and Listed hoses and nozzles with electric pumps and dispensers.

DO NOT block open the nozzle in any manner. Nozzles shall conform to UL and NFPA code requirements for attended or unattended service.

DO ensure that the pump is equipped with proper filters based on the product being dispensed and its intended use.

DO wear safety goggles and protective clothes when dispensing any liquid which may be potentially harmful or hazardous.

DO keep all parts of body and loose clothing clear of belts, pulleys, and other exposed moving parts at all times.

DO require washing and changing of clothes if fuel is spilled on a person or his/her clothing. Keep away from open flames, sparks, or people smoking.

DO provide a receptacle for catching product from pump/meter when servicing.

DO clean up product spills on the driveway. Turn off and lock out all power prior to cleanup.

DO insure pump is properly grounded.

DO insure hose is compatible with fluid being dispensed.

DO inspect hose, nozzle, and pump on a regular basis for wear, damage, or other conditions which may create a safety or environmental hazard.

DO make sure all pipe threads are properly cut and the inside reamed to remove burrs. Use UL classified gasoline-resisting compound on all joints of gasoline handling piping. Sealing compound must also be resistant to Gasohol (Ethanol and Methanol). Use gasoline-resistant pipe compound on male threads only; pipe compound used on female threads can be squeezed into the supply line where it can enter the product stream and become lodged in the pump or meter.

DO ensure that junction box covers are in place and properly tightened. Mating surfaces between the box and cover must be free of dirt, nicks, and scratches. All unused entries into the junction box must be properly plugged.

CONTENTS

PARTS LIST	1
Using This Parts List	1
Remote Register - Front View.....	2
Remote Register - Side View	3
Remote Register Mounting Options.....	4
Remote Register Chassis Assembly - Top View.....	5
Remote Register Chassis Assembly - Front View	6
Remote Register Bearing Plate Assembly Breakdown	7
Nozzles	7
Switch Adjustment	7
Meter and Pump Cabinet - Frame Module.....	8
Panel Module	9
Meter Module	10
Meter Breakdown.....	11
Motor.....	12
Pump.....	13
Pumping Unit Breakdown	14
Discharge, 9822Q, 042787	15
Discharge, 9822Q, Filter 042789	16
Discharge, 9822Q, Filter, Solenoid Valve 042792	17
Discharge, 9822Q, Filter, Vapor Recovery, 042702	18
Discharge, 9822Q, Filter, Solenoid Valve, Vapor Recovery, 042706	19
Discharge, 9822Q, Solenoid Valve, 042796, 042797	20
Discharge, 9822Q, Solenoid Valve, Vapor Recovery, 042703	21
Discharge, 9822Q, Vapor Recovery, 042701	22
Discharge, 9823Q, 042788.....	23
Discharge, 9823Q, Filter 042791	24
Discharge, 9823Q, Filter, Solenoid Valve 042794, 024795	25
Discharge, 9823Q, Solenoid Valve, 042798, 042799	26
High Hose Retriever Option	27
Mechanical Totalizer Option	28
9820Q Series Kits and Accessories.....	29

PARTS LIST

Using This Parts List

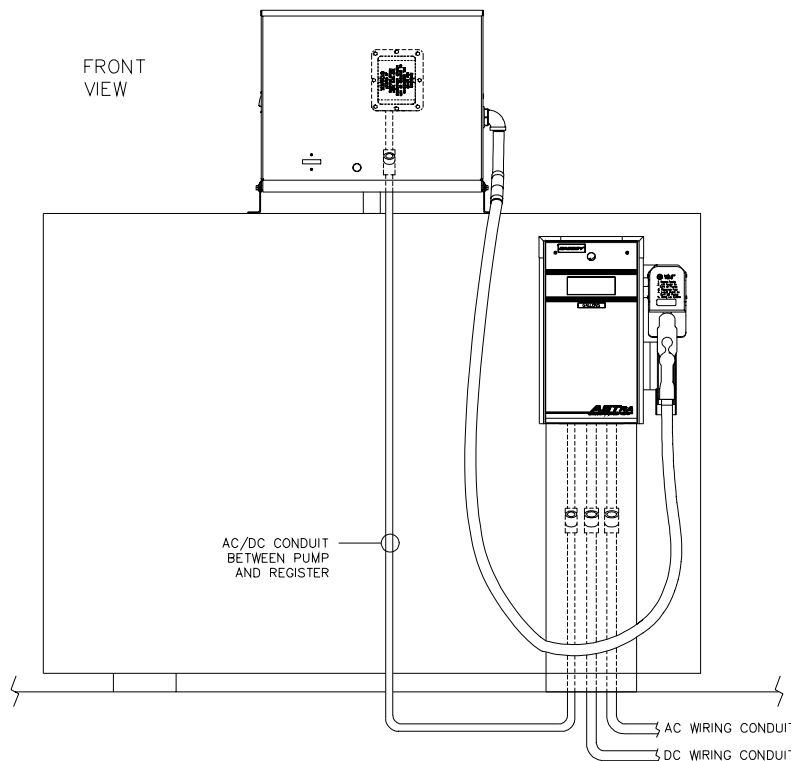
This manual lists parts information for the GASBOY Series 9820A ASTRA (aboveground storage tank remote access) pumps. Using part numbers when ordering will expedite your order and reduce the possibility of the wrong parts being shipped. When ordering replacement parts, be sure to give the complete name and part number as shown in the appropriate parts list. It is also helpful to supply the serial number of the equipment.

This manual is arranged with the remote register first followed by the pumping unit and any individual breakdowns. If you can't find the part you need from the chassis drawing, be sure to check the appropriate parts breakdown.

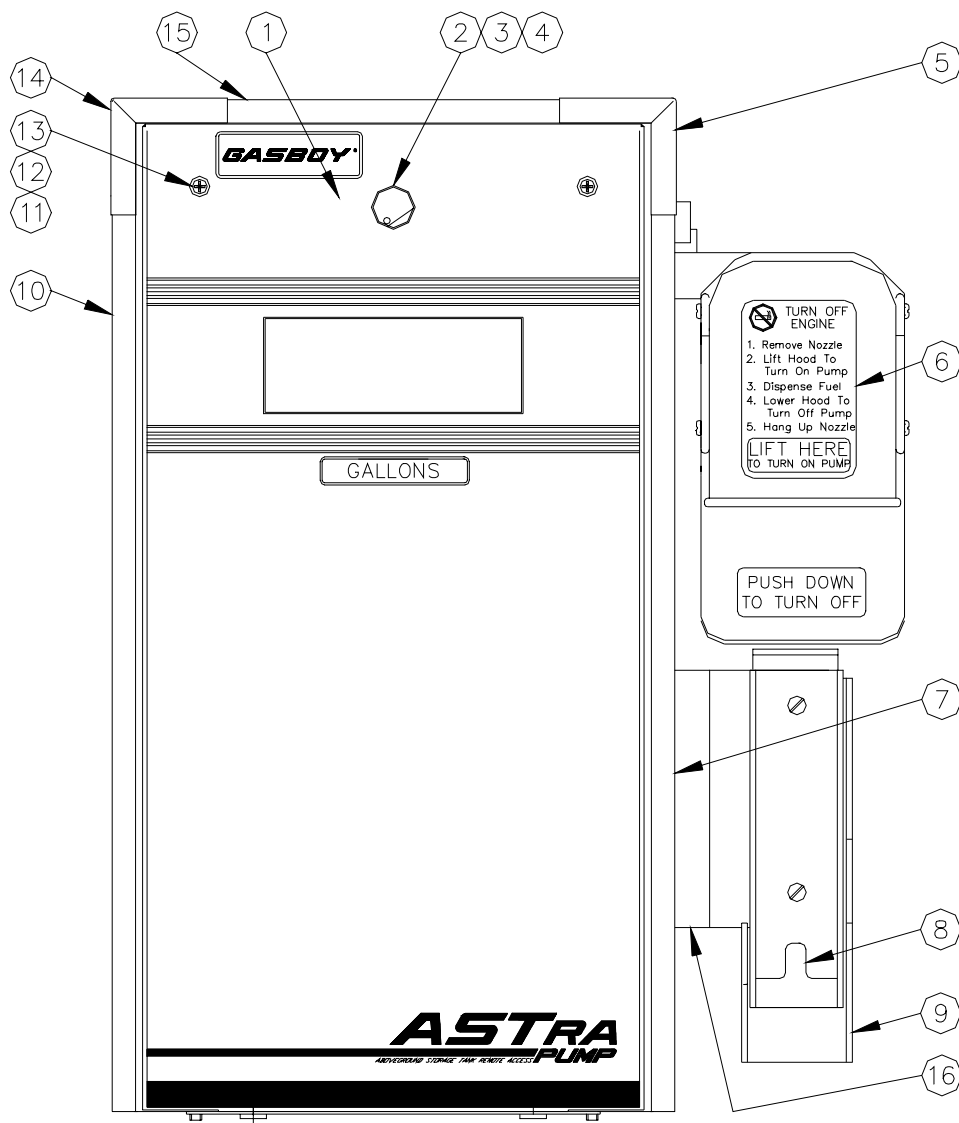
Procedures requiring disassembly of portions of the pump/dispenser should be performed by competent service personnel. Do not depend upon the repair service of a general mechanic unless he is thoroughly familiar with the mechanism. GASBOY has a distributor network which services fuel dispensing equipment and management systems in every section of the country.

WARNING:

To reduce the risk of electrical shock when servicing, turn off and lock out all power to the pump. Also block islands so no vehicles can pull up to the pump when the pump is being worked on.



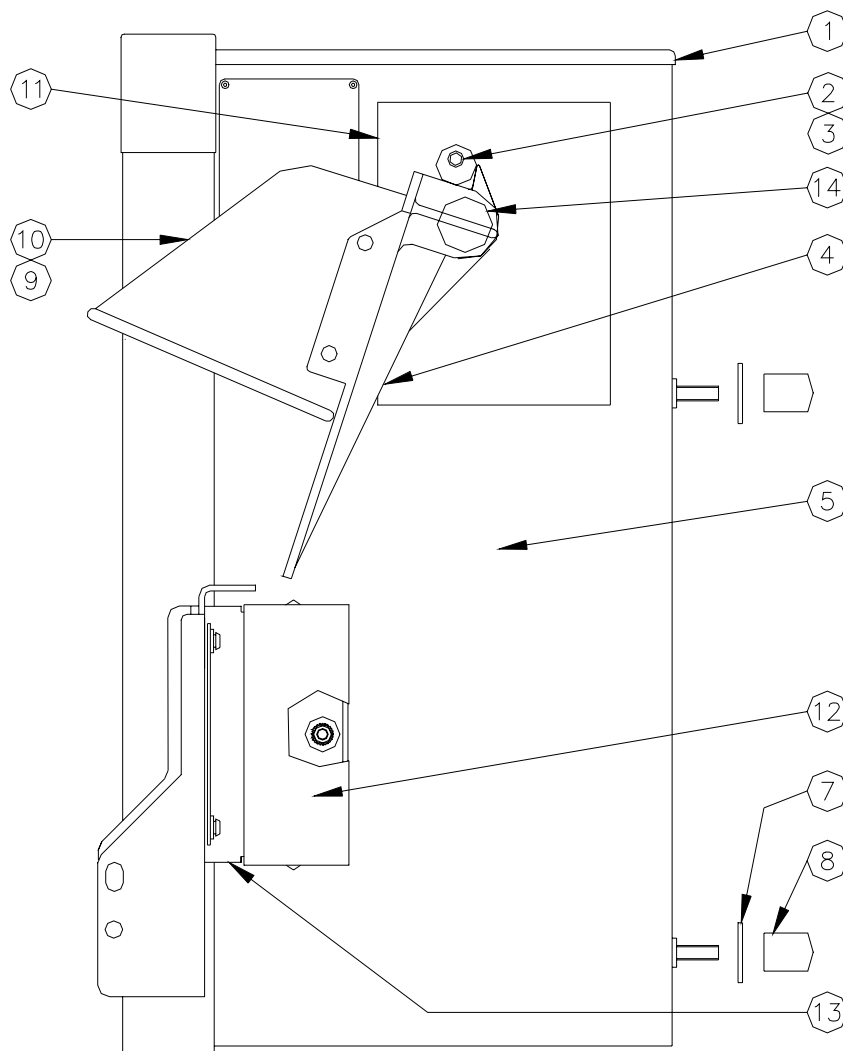
Remote Register - Front View



Item	Part No.	Description	Item	Part No.	Description
1	040994	Door Assy., Remote Register (Specify brand and measure)	8	015784	Bracket, Nozzle Support
2	*035009	Lock, 90°, w/Cover and Seal	9	015782	Bracket, Nozzle Locking
	*099400	Key (Not Shown; Must supply WMX # from lock)	10	065521	Trim, PVC, Left
3	C35698	Cam, Lock, Bezel, Series 900	11	C08867	Screw, Captive 8-32 x 1/2
4	*026808	Gasket, Lock, Black	12	067666	Washer, Nylon Sealing
5	065523	Trim, Corner, RH	13	C08851	Washer, 8-32, Screw Retain
6	023613	Decal, Operating Instructions	14	065524	Trim, Corner, LH
7	065522	Trim, PVC, Right	15	065520	Trim, Top
			16	015694	Bracket, Tamper-proof

*Indicates part is a subpart of the preceding part.

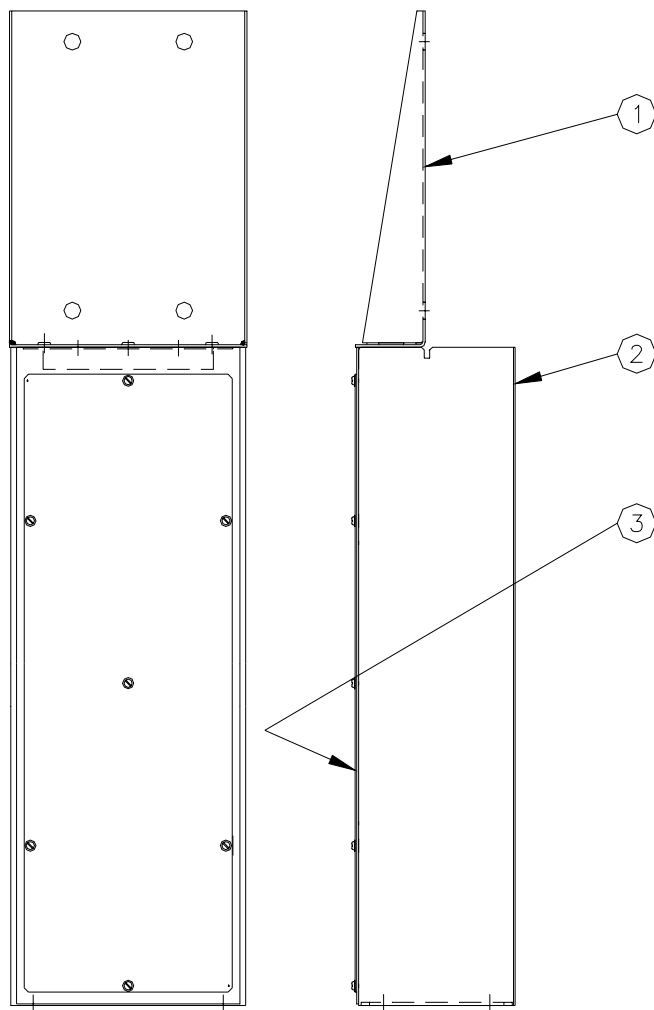
Remote Register - Side View



Item	Part No.	Description
1	040996	Panel, Top Cover, 9820 Register (See Note)
2	C09585	Stop
3	C09584	Cushion Sleeve
4	003771	Lever, Control, 9820 Mach
5	040999	Housing Weld Assy. (See Note)
7	042083	Bracket, Mounting
8	C08849	Cover, Bolt
9	029416	Hood
10	063507	Hood, Support Assy.
11	045988	Bearing Plate Assembly (See breakdown)
12	015760	Cover
13	015694	Bracket, Tamper-proof
14	042657	Roll Pin, 1/8 x 1-3/8 (Not Shown)

NOTE: Specify standard color (black, white, red). If not a standard color, specify serial number of pump/dispenser.

Remote Register Mounting Options



Pedestal (Shown at Left) - 042082

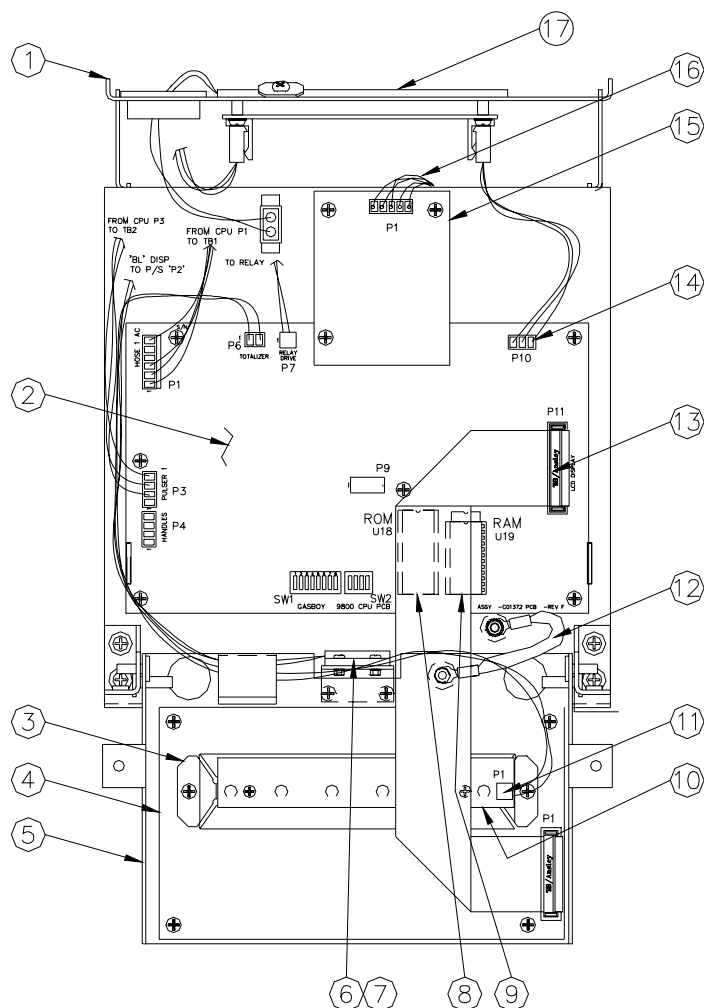
Item	Part No.	Description
1	042073	Bracket Housing Mounting
2	042080	Weld Assy., Pedestal Body
3	042081	Cover

Side Mounting Bracket (Not Shown*) - 015128

Rear Mounting Bracket (Not Shown*) - 015127

*For installation diagrams, see the *ASTRA Installation/Operation Manual*.

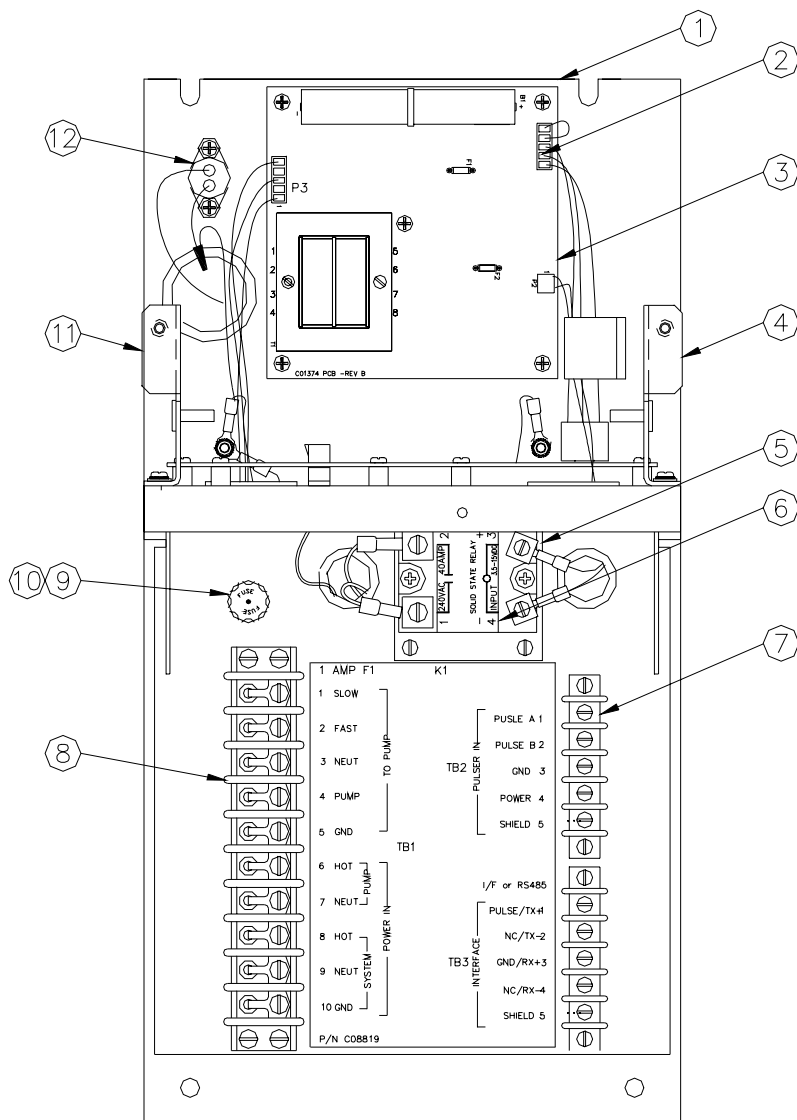
Remote Register Chassis Assembly - Top View



Item	Part No.	Description	Item	Part No.	Description
1	C35584	Weld Assy., Chassis	12	C06454	Cable Assy., Ground Strap
2	C06391	PCB Assy., CPU 120VAC	13	C06672	Cable Assy., CPU/Disp Ribbon
	C06500	PCB Assy., CPU 240 VAC	14	C06679	Cable Assy., DC Power
3	C35399	Reflector, LCD Backlight	C07092		Optional RS-485 PCB Kit
4	C06387	PCB Assy., LCD Display	15	C06389	PCB Assy., RS-485
5	C35543	Bracket Assy., Display Door	16	C06678	Cable Assy.
6	C06673	Cable Assy., Totalizer w/ Bracket	C07057		Optional Pump I/F Kit
7	C01342	Actuator, Totalizer (Not Shown)	15	C06425	PCB Assy., Pump I/F
8	C06426	IC. Programmed, 32K EPROM (NOTE: You must specify program type: 9800, 9800 Liter)	16	C06678	Cable Assy
9	C01383	IC, RAM 2k x 8	17	C06677	Cable Assy., Heater, 120VAC
10	C06372	PCB Assy., LED Backlight		C06721	Cable Assy., Heater 240VAC
11	C06668	Cable Assy., Display/Power Supply			

*Indicates part is a subpart of the preceding part.

Remote Register Chassis Assembly - Front View

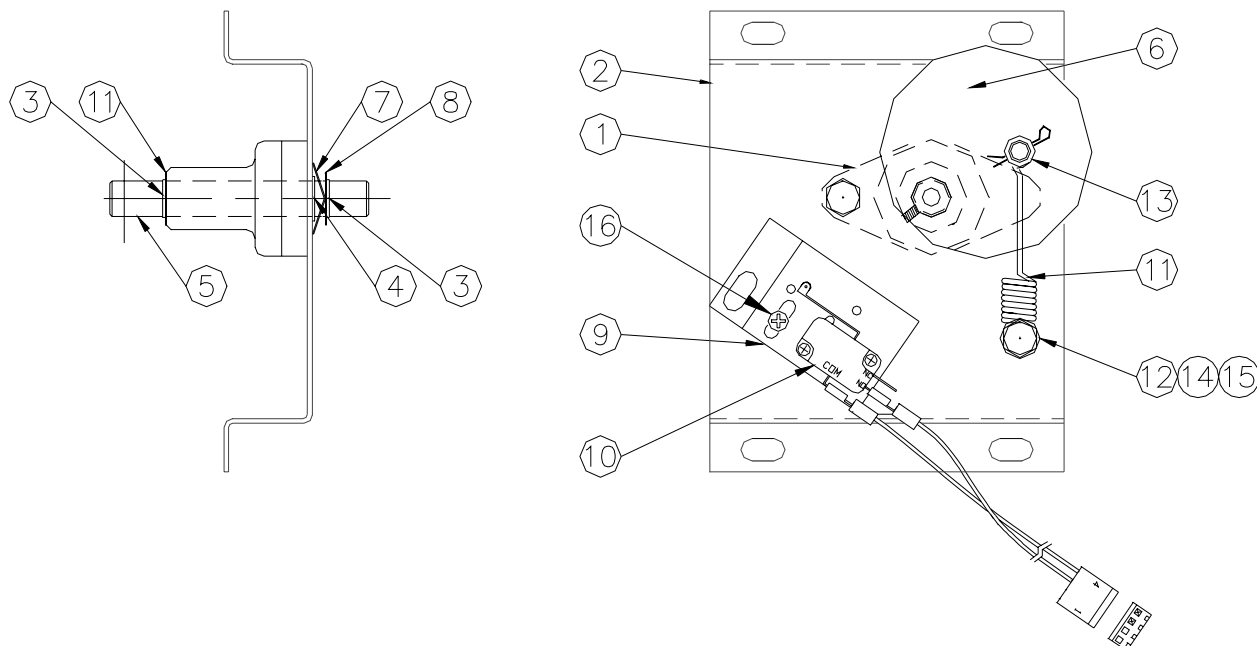


FRONT VIEW
DISPLAY DOOR REMOVED

Item	Part No.	Description	Item	Part No.	Description
1	C35584	Weld Assy, Chassis	7	C06674	Cable Assy., 5-pos. TB
2	C06679	Cable Assy., DC Power	8	C06675	Cable Assy., 10-pos. TB
3	C06396	PCB Assy., PS w/o Batt, 115V	9	C02065	Fuse Holder, 3AG, Solder
	C06397	PCB Assy., PS w/ Batt, 115V		C09546	Fuse Holder, Quick Conn.
	C06488	PCB Assy., PS w/o Batt, 230V	10	C04044	Fuse, 1 Amp SB 3 AG Glass
	C06489	PCB Assy., PS w/ Batt, 230V	11	C35539	Bracket Assy., LH Hinge
4	C35538	Bracket Assy., RH Hinge	12	C06677	Cable Assy., Heater, 120 VAC
5	C06681	Relay Assy.		C06721	Cable Assy., Heater, 240 VAC
6	*C08746	Relay, Solid State			

*Indicates part is a subpart of the preceding part.

Remote Register Bearing Plate Assembly Breakdown



Item	Part No.	Description
1	003184	Start Shaft Bearing
2	015990	Bracket, Start Switch
3	048612	Retaining Ring, Truarc
4	011958	Bearing, Nyliner
5	054447	Shaft-Start 9800 Series
6	046054	Plt, Start Shaft (F)
7	068951	Wave Washer, 12V/24V
8	067109	Washer, Brass

Item	Part No.	Description
9	C06670	Cable Assy., CPU/Handle
10	*C03334	Switch, SPDT, Snap-Action
11	029358	Handle, Spring
12	C08914	Bushing, Shoulder, Nylon
13	C08913	Bushing, Shoulder, Nylon
14	038605	Nut 5/16 Hex
15	051940	Bolt, 5/16
16	052735	Screw, 8/32

*Indicates part is a subpart of the preceding part.

Nozzles

Acceptable nozzles for Vapor Recovery models (V suffix) are: Emco Wheaton A4015, Husky 5010, and OPW 211V.

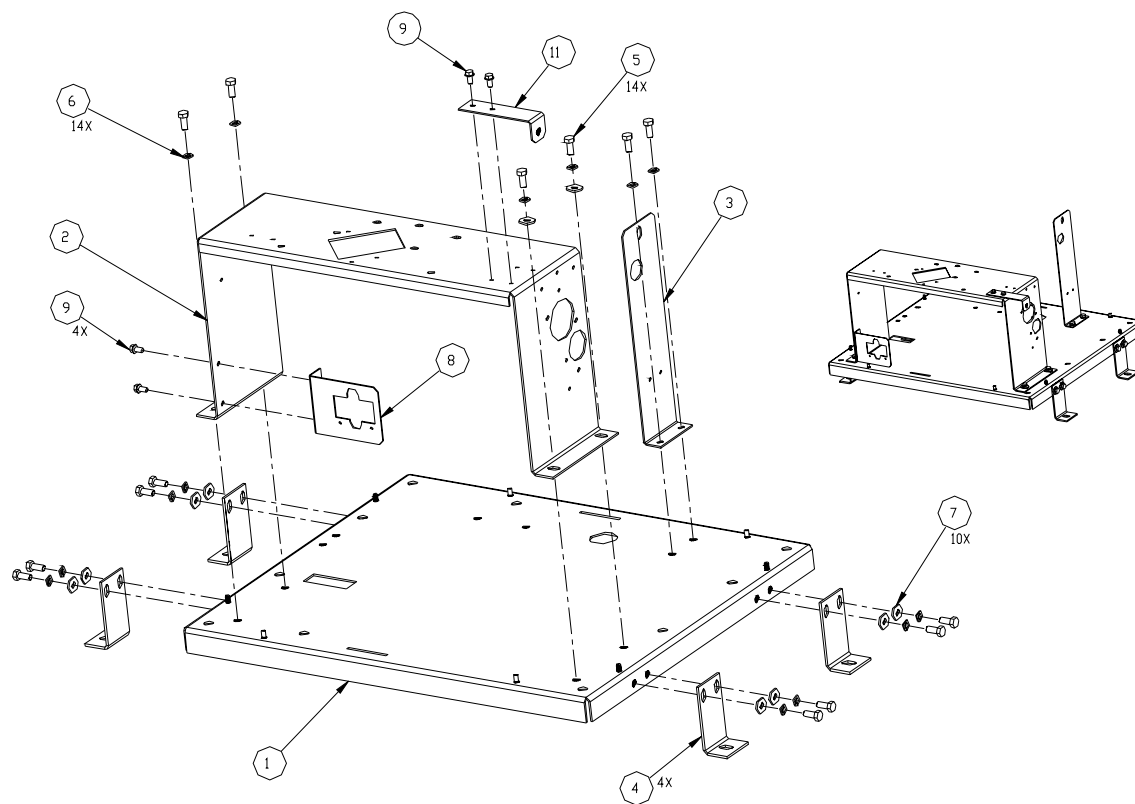
Vapor Recovery Ready models (Y suffix) can use the above nozzles after retrofit for vapor recovery.

Nozzles for all other models must be UL-Listed Service Station type hose nozzle valves.

Switch Adjustment

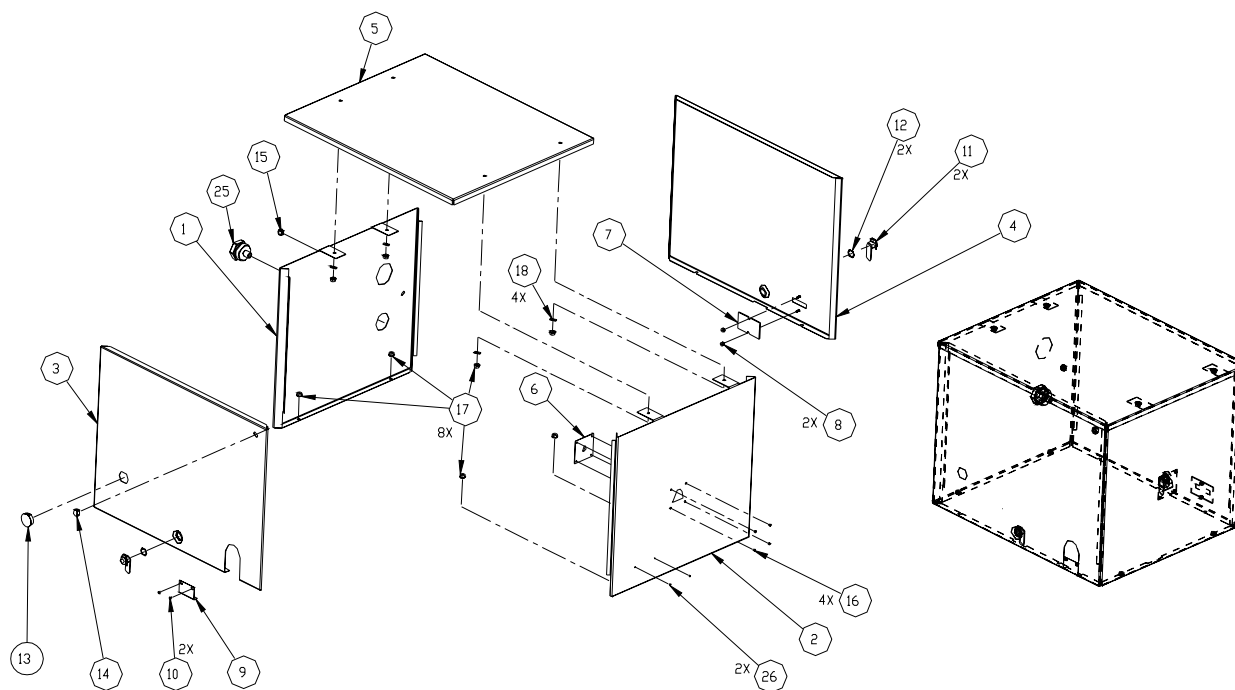
To adjust switch, loosen screw (item 16). Pivot bracket (item 9) close to start plate (item 6), then tighten screw (item 16).

Meter and Pump Cabinet - Frame Module



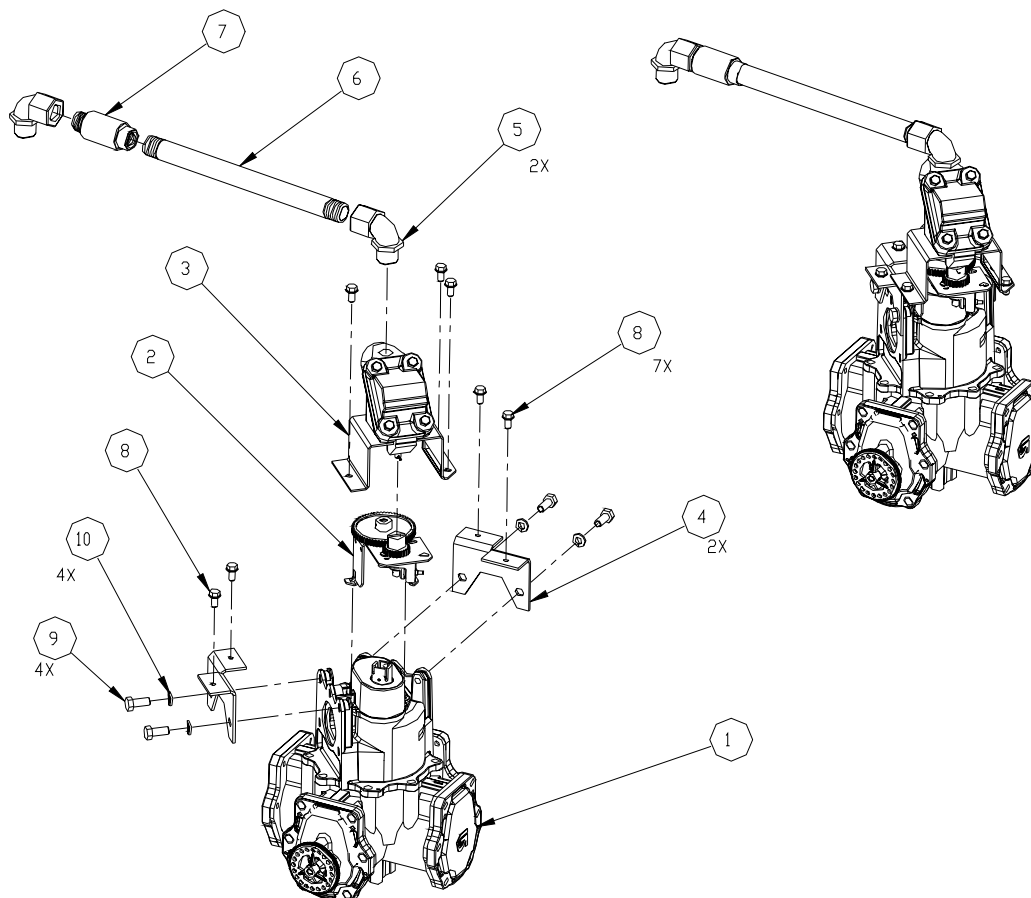
Item	Part No.	Description
1	022583	Base Assembly
2	022584	Bracket, Meter, Reset, Register Mounting
3	022581	Bracket, J-Box Mounting
4	026401	Mounting, Foot
5	051821	Screw, 5/16-18-3/4 HHC SS
6	068874	Washer, Lock 5/16, SS
7	068079	Washer, 5/16 Std, SS
8	022577	Bracket, Totalizer (Only on models ordered with mechanical totalizer)
9	053919	Screw, 1/4-20 x 1/2 HH TapTite (Only on models ordered with mechanical totalizer)
11	022579	Bracket, High Hose Retriever

Panel Module



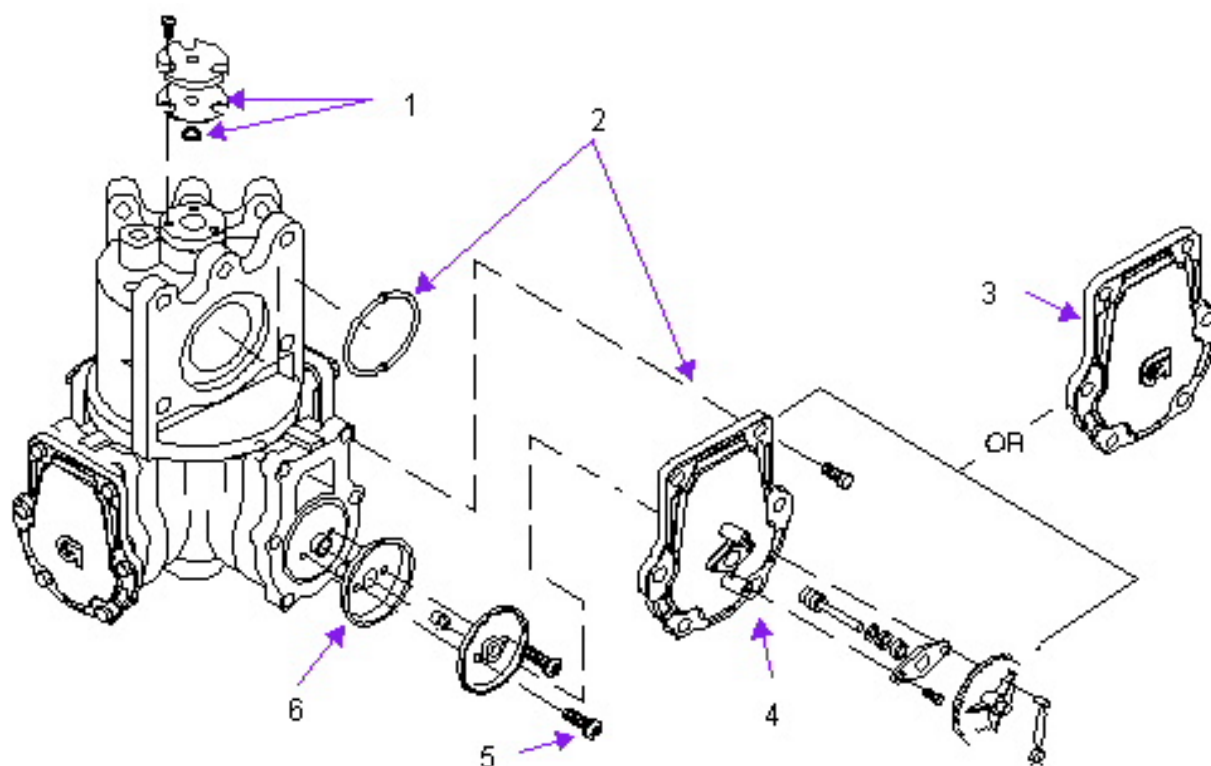
Item	Part No.	Description
1	022589	Panel, Right Side, 9820Q
	022594	Panel, Right Side, Filter, Solenoid Valve
	022595	Panel, Right Side, Vapor Recovery, Vapor Recovery Ready
	022596	Panel, Right Side, Filter, Solenoid Valve, Vapor Recovery, Vapor Recovery Ready
2	022592	Panel, Left Side
3	022591	Panel Assembly, Back
4	022574	Panel, Front
5	022593	Panel Assembly, Top
6	045804	Plate
7	069076	Window, Totalizer, 9-Digit
8	039070	Nut, Hex Keps 8-32
9	041809	Bracket, Inlet Casting
10	049560	Rivet, Pop, 3/16
11	035017	Door Lock W/Clip
12	026799	Gasket, Lock
13	047211	Plug, 1-3/8 (Non VR Units Only)
14	C02828	Plug Button, 5/8
15	047214	Plug, 1/2
16	049901	Rivet, 5/32
17	038740	Nut, 1/4-20 HH
18	068005	Washer, 1/4
25	064551	Adapter, Non-Swivel (Vapor Recovery Ready Unit Only)
26	049871	Rivet, 9820Q

Meter Module



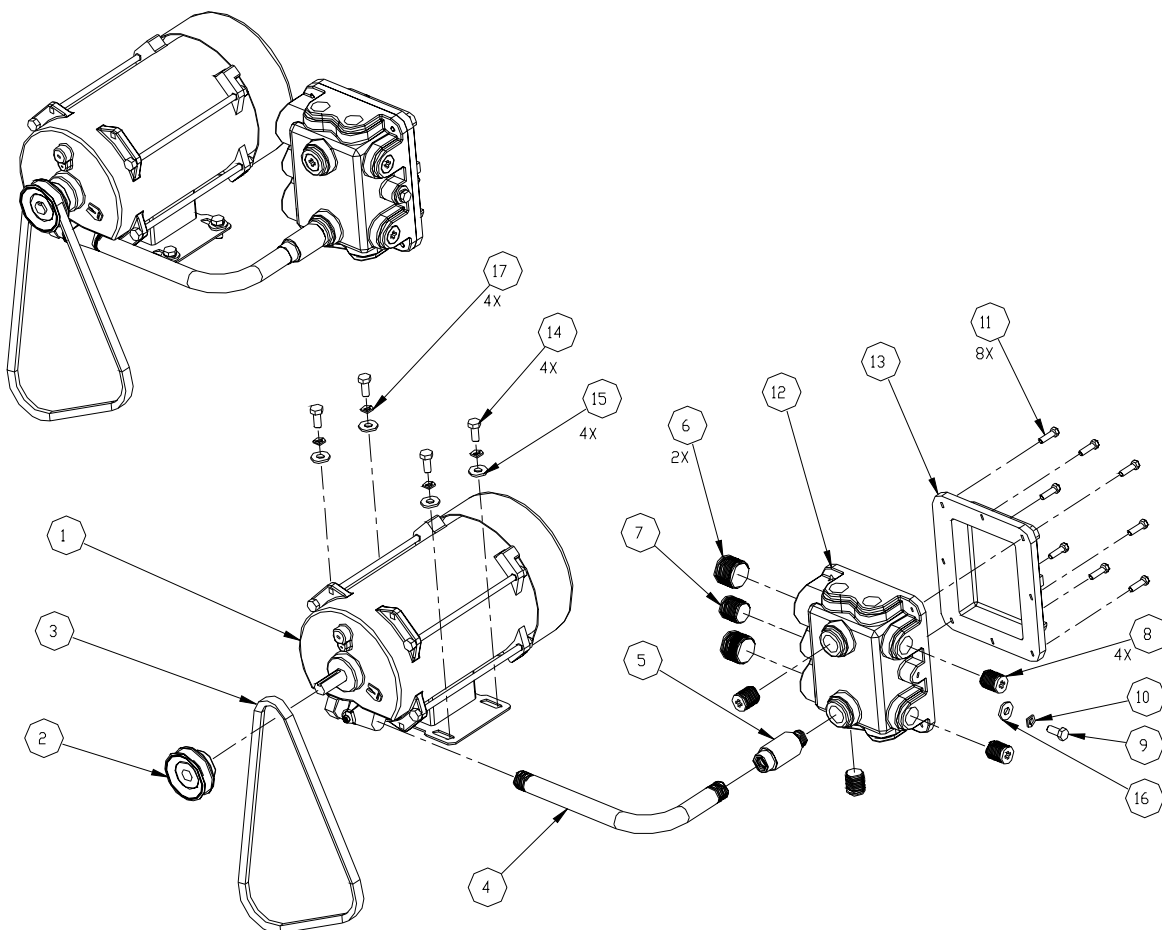
Item	Part No.	Description
1	035743	Meter, 4:1 Gallon
	035955	Meter, 2:1 Liter
2	028001	Gear Train Assembly, Gallon
	028002	Gear Train Assembly, Liter
3	068998	Pulser Assembly
4	022580	Bracket, Meter Mounting
5	025045	Elbow, Conduit, 1/2 X 90
6	038124	Conduit, 1/2 X 9-7/8, Gallon
	021378	Conduit, 1/2 X 9-1/2, Liter
7	066400	Explosion-Proof Conduit Union, 1/2" UNY
8	053919	Screw, 1/4-20 X 1/2 HH Taptite
9	051895	Screw, 5/16-18 X 3/4, HHC
10	068875	Lockwasher, 5/16 Pltd

Meter Breakdown



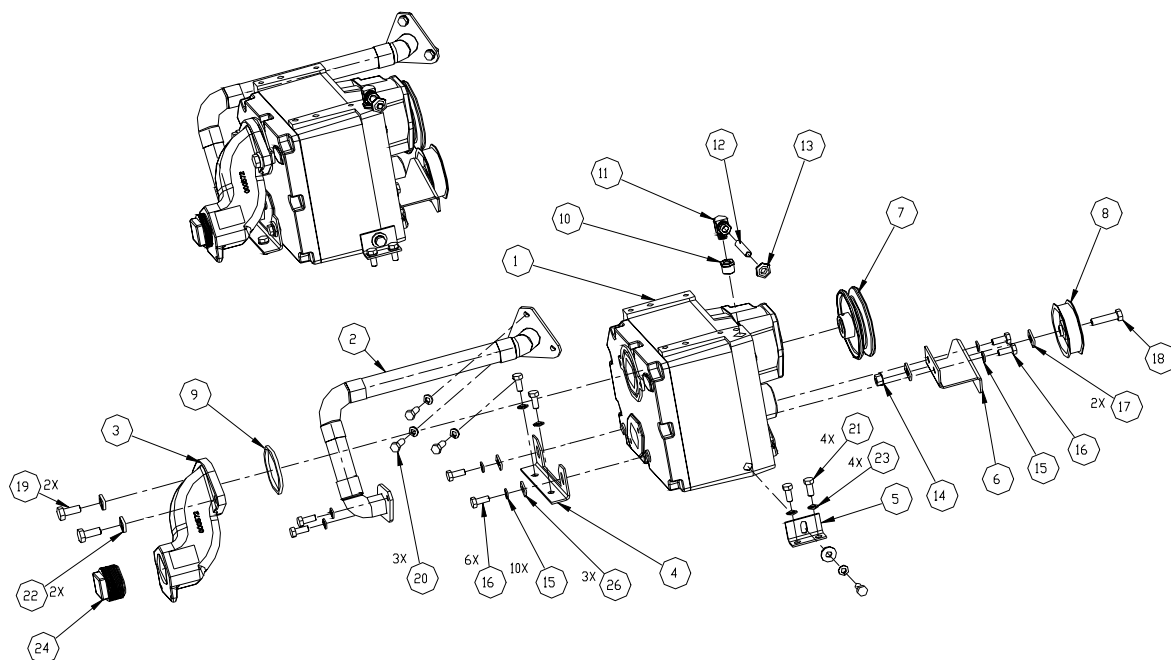
Item	Part No.	Description
1	063232	Quad Ring Kit (shaft seals, gaskets, alignment tools to service 10 meters)
2	063233	Gasket and O-Ring kit (cover gaskets, and O-rings, flange O-rings)
3	063234	Cylinder Cover, Plain
4	063235	Adjustment Screw and Cylinder Cover Assy.
5	063236	Screw, 10-32 x 5/8", SST
6	063237	Piston Cup, Formed
7	063238	Meter Check valve Kit (includes check valve, O-rings, adapter)

Motor



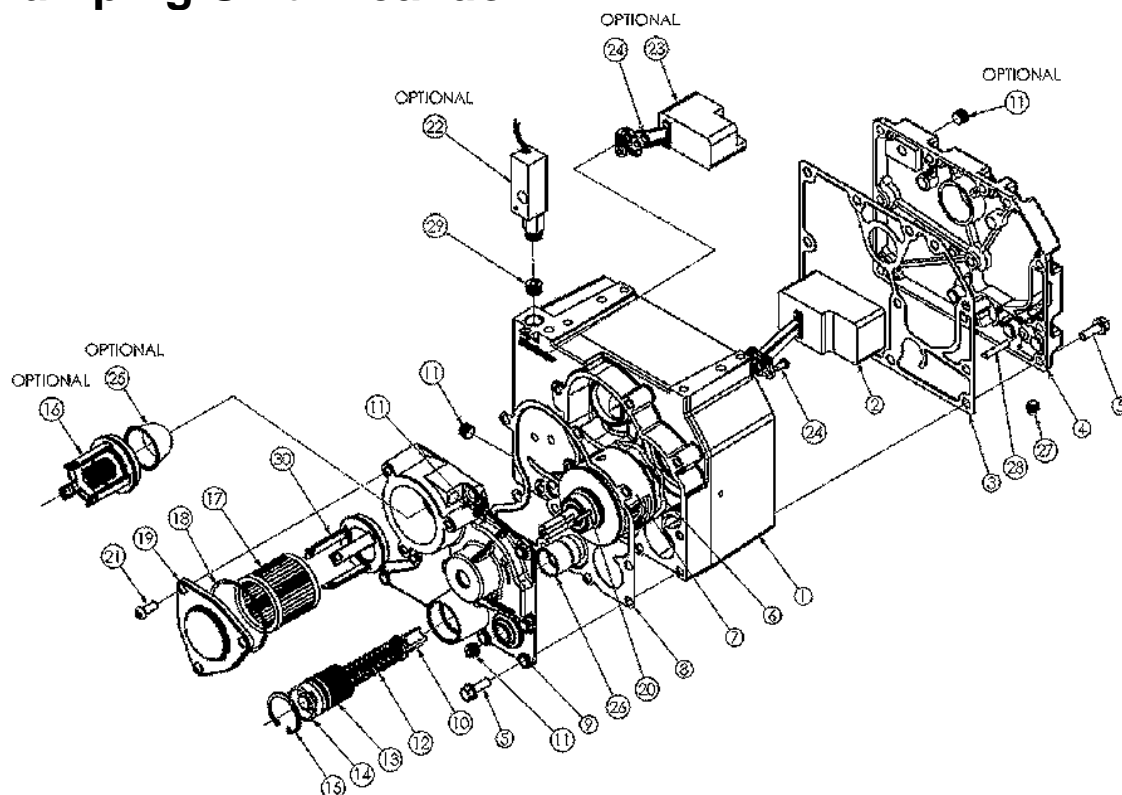
Item	Part No.	Description
1	F37351	Motor, 3/4 HP
2	047006	Pulley, 5/8 Bore 2-3/4, 50 Hz
	047005	Pulley, 5/8 Bore, 2.4, 60 Hz
3	012148	Belt, 4L330-A31
4	023994	Conduit, Bent Motor
5	066400	Explosion-Proof Conduit Union, 1/2" UNY
6	047305	Plug, Pipe, Sq Hd 1"
7	047290	Plug, Pipe, Sq Hd 3/4"
8	047247	Plug, 1/2 Conduit
9	051895	Screw, 5/16-18 x 3/4, HHC
10	068875	Lockwasher, 5/16 Pltd
11	051808	Screw, 1/4-20 x 7/8 HHC
12	003116	J-Box, AC Mach
13	003117	J-Box, AC Cover Mach
14	052453	Screw, M8 1.25 x 20mm
15	068080	Washer, 5/16
16	068079	Washer, 5/16 Std, SS
17	068875	Lockwasher, Std, Spring, 5/16

Pump



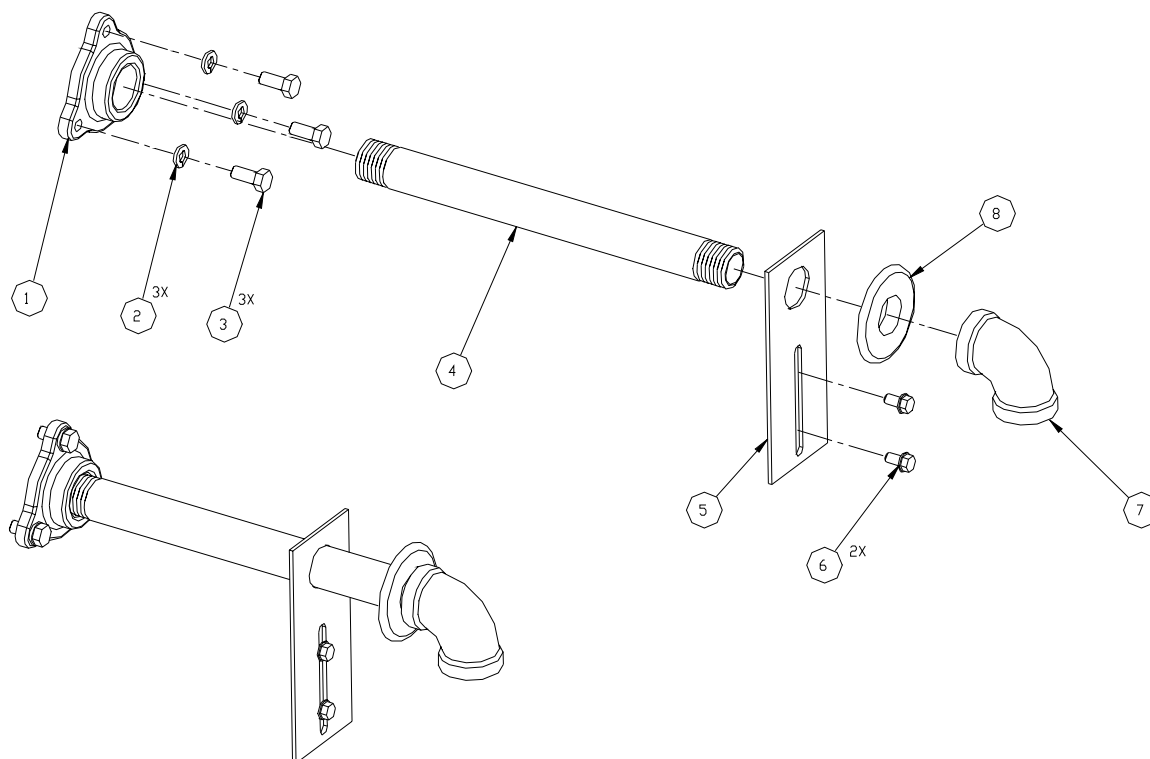
Item	Part No.	Description
1	049786	Pump, Blackmer
2	063611	Tube Assembly
3	003572	Inlet Casting
4	041686	Bracket, Pump Mounting, Rear
5	041687	Bracket, Pump Mounting, Side
6	047307	Bracket, Idler Pulley
7	047293	Pulley, 5/8 Bore, 4"
8	047009	Pulley, Idler
9	049185	Ring, Square, 2.42 Id
10	017266	Bushing, 3/8 X 1/4
11	026038	Fitting, El, 3/8 Flare
12	032419	Tube Vent Blackmer Pump
13	058021	Grommet
14	038621	Nut, Hex Keps, 3/8-16
15	068875	Lockwasher, Std, Spring, 5/16
16	052453	Screw, M8 1.25 x 20mm
17	068035	Washer, 3/8
18	052075	Screw, 3/8-16 x 1-1/2 HHC
19	052455	Screw M10 1.5 x 25mm
20	051895	Screw, 5/16-18 x 3/4, HHC
21	051821	Screw, 5/16-18-3/4 HHC SS
22	068920	Washer, Lock, Std Spring, 1/2
23	068874	Washer, Lock 5/16, SS
24	047243	Plug, 1-1/2 - 11-1/2 NPT
26	068080	Washer, 5/16

Pumping Unit Breakdown



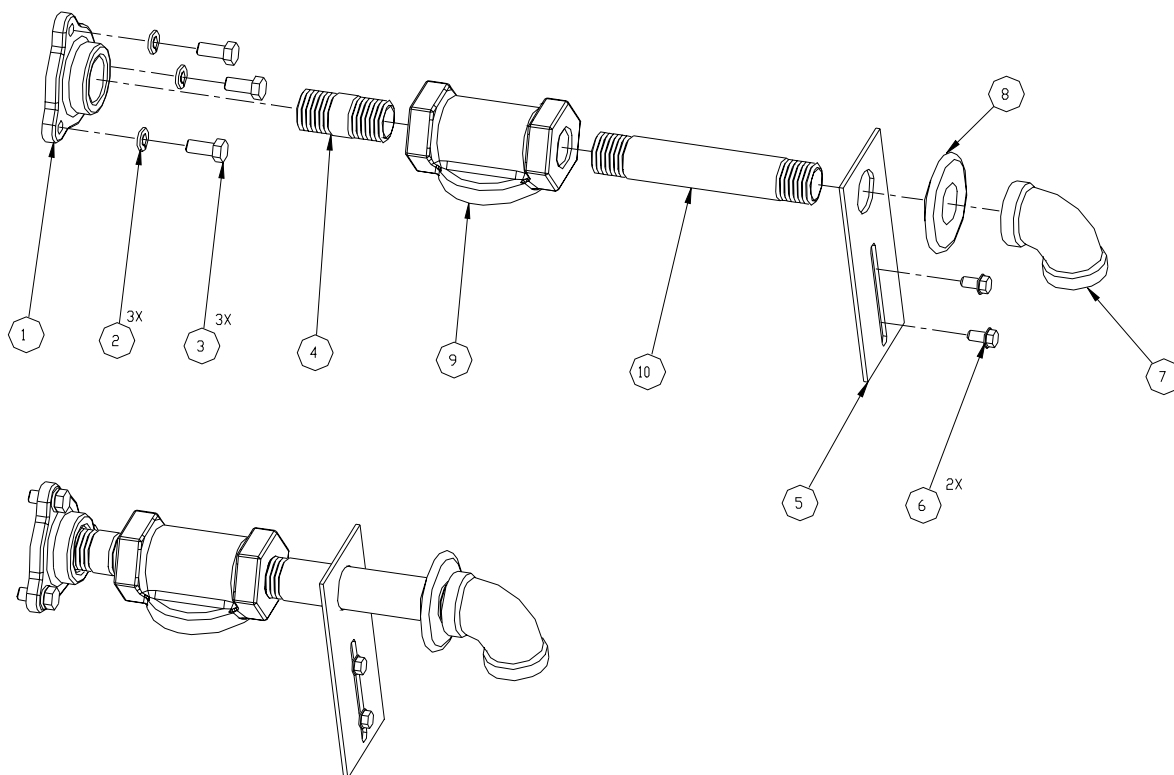
Item	Description	Part Number
1	Casing, Pump	Not available for sale
2	Float Assy., Sump	063202
3	Gasket, Sump	063221
4	Sump Cover Assy.	Not available for sale
5	Screw, Taptite	Not available for sale
6	Wave Spring	Kit - 063230
7	Pump Cartridge	Kit - 063230
8	Gasket, Head	063222
9	Head	Not available for sale
10	Pressure Control Valve (PCV)	Kit - 063229
11	Plug	047304
12	Spring, PCV	Kit - 063229
13	Cover, PCV	Not available for sale
14	O-Ring, PCV Cover	063223
15	Retaining Ring	Kit - 063229
16	Check Valve Assy.	Kit - 063228
17	Strainer	Kit - 063228
18	O-Ring, Strainer Cover	063224
19	Cover, Strainer	Not available for sale
20	Key, Shaft	063225
21	Capscrew	Not available for sale
22	OIML Switch Assy.	Not available for sale
23	Float, Sump Overflow Assy.	Kit - 063231
24	Capscrew	Not available for sale

Discharge, 9822Q, 042787



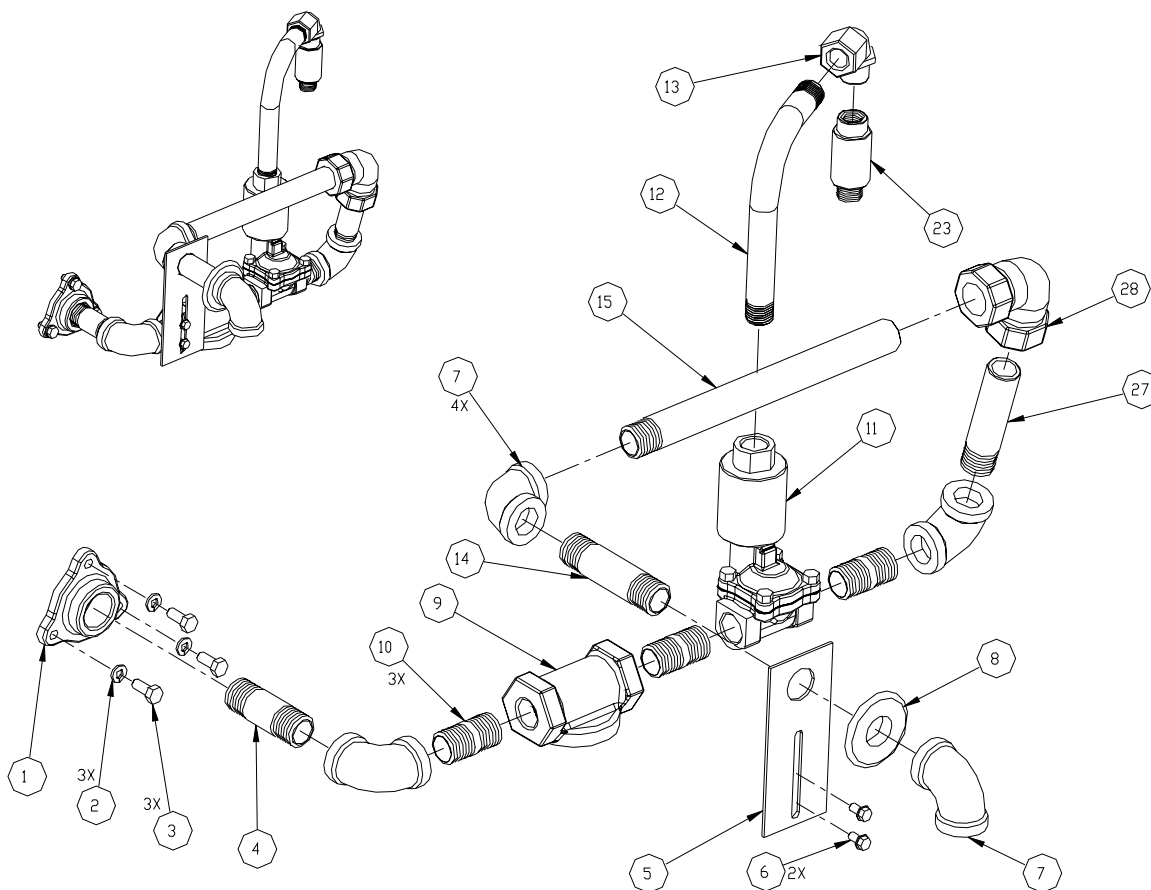
Item	Part No.	Description
1	003237	Flange
2	068875	Lockwasher, Std, Spring, 5/16
3	051895	Screw, 5/16-18 x 3/4, HHC
4	044141	Pipe, TBE, 3/4 x 10-3/4
5	015488	Bracket Discharge, 3/4 Pipe
6	053919	Screw, 1/4-20 x 1/2 HH TapTite
7	024955	Elbow, 3/4 x 90
8	028930	Grommet Discharge, 3/4"

Discharge, 9822Q, Filter 042789



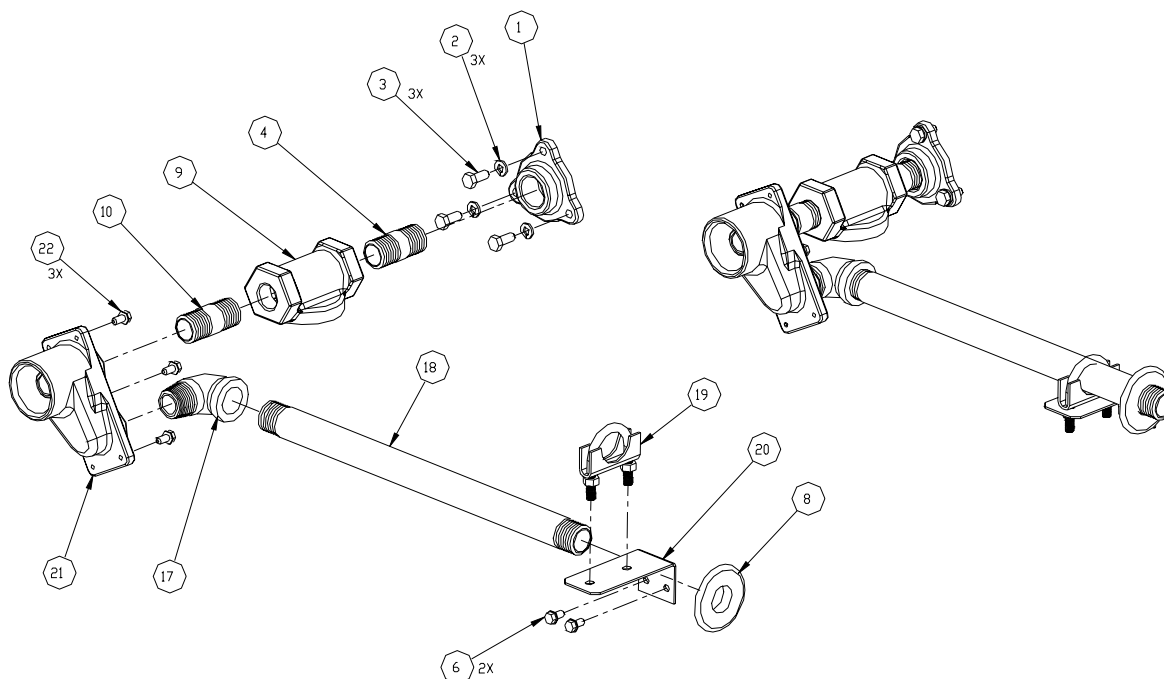
Item	Part No.	Description
1	003237	Flange
2	068875	Lockwasher, Std, Spring, 5/16
3	051895	Screw, 5/16-18 x 3/4, HHC
4	044476	Pipe, TBE, 3/4 x 2-1/4
5	015488	Bracket Discharge, 3/4 Pipe
6	053919	Screw, 1/4-20 x 1/2 HH TapTite
7	024955	Elbow, 3/4 x 90
8	028930	Grommet Discharge, 3/4"
9	003047	Adapter, Register
10	044065	Pipe, TBE, 3/4 x 5-3/4

Discharge, 9822Q, Filter, Solenoid Valve 042792



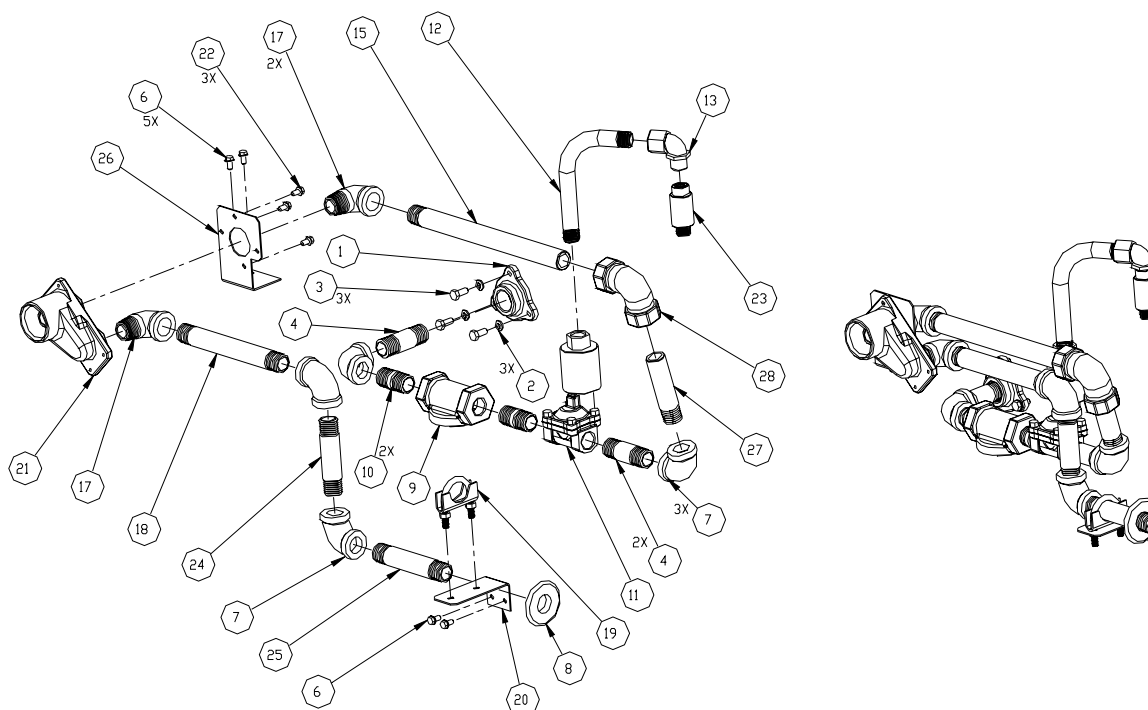
Item	Part No.	Description
1	003237	Flange
2	068875	Lockwasher, Std, Spring, 5/16
3	051895	Screw, 5/16-18 x 3/4, HHC
4	043977	Pipe, TBE, 3/4 x 3
5	015488	Bracket Discharge, 3/4 Pipe
6	053919	Screw, 1/4-20 x 1/2 HH TapTite
7	024955	Elbow, 3/4 x 90
8	028930	Grommet Discharge, 3/4"
9	003043	Adapter, Filter, 3/4"
10	043960	Pipe, TBE, 3/4 x 2
11	067054	Valve, 3/4" High Flow, 115V
12	023918	Conduit, Bent 3/4"
13	025045	Elbow, Conduit, 1/2 X 90
14	044015	Pipe, TBE, 3/4 x 4
15	045113	Pipe, TOE, 3/4 x 10-1/2
23	025045	Elbow, Conduit, 1/2 X 90
27	024909	Elbow, Dresser, 3/4 x 90
28	045120	Pipe, TOE, 3/4 x 4

Discharge, 9822Q, Filter, Vapor Recovery, 042702



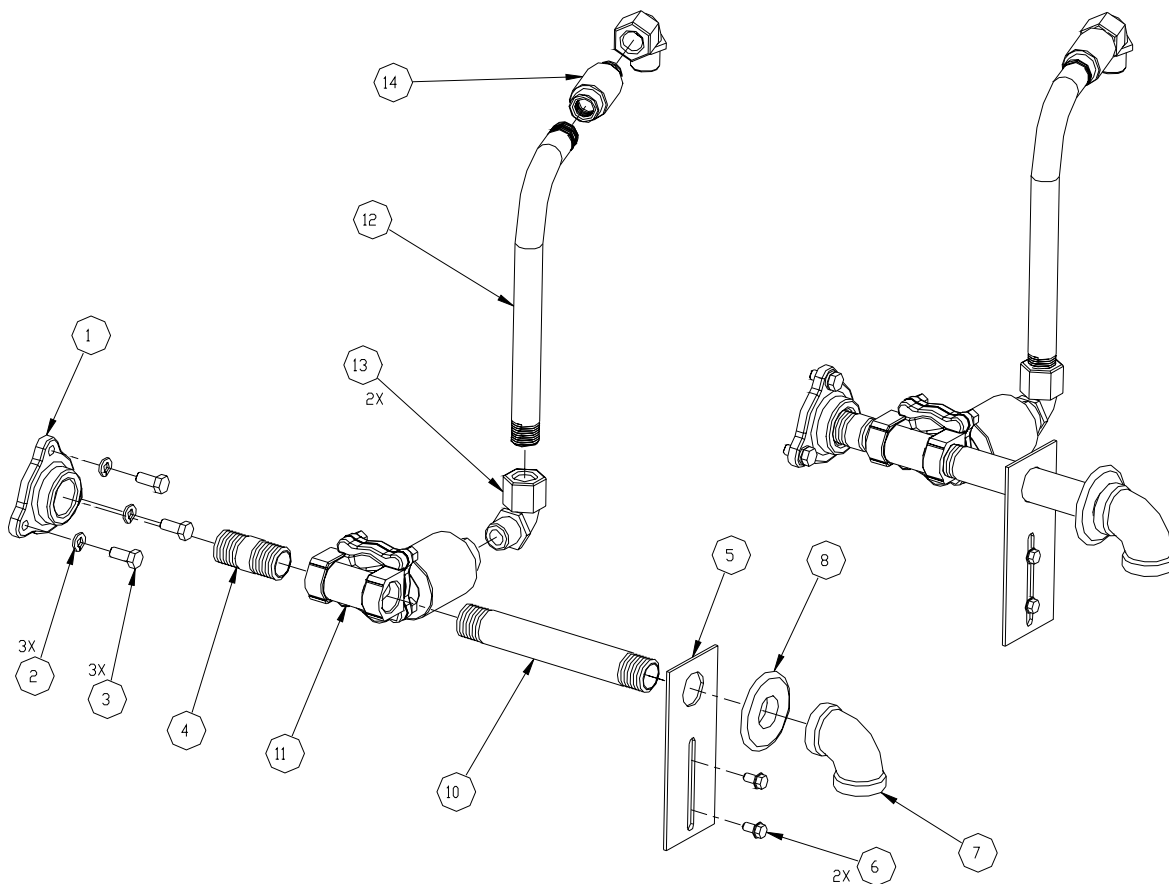
Item	Part No.	Description
1	003237	Flange
2	068875	Lockwasher, Std, Spring, 5/16
3	051895	Screw, 5/16-18 x 3/4, HHC
4	044048	Pipe, TBE, 3/4 x 2-3/8
6	053919	Screw, 1/4-20 x 1/2 HH TapTite
8	028930	Grommet Discharge, 3/4"
9	003043	Adapter, Filter, 3/4"
10	043960	Pipe, TBE, 3/4 x 2
17	024940	Elbow, Street 3/4 x 90
18	044159	Pipe, TBE, 3/4 x 15-1/2
19	013295	Bolt, U, 1-3/8 ID
20	022576	Bracket, U-Bolt Mounting
21	049980	Casting, Splitter VP Emco
22	051790	Screw, 1/4-20 x 1/2 HHC

Discharge, 9822Q, Filter, Solenoid Valve, Vapor Recovery, 042706



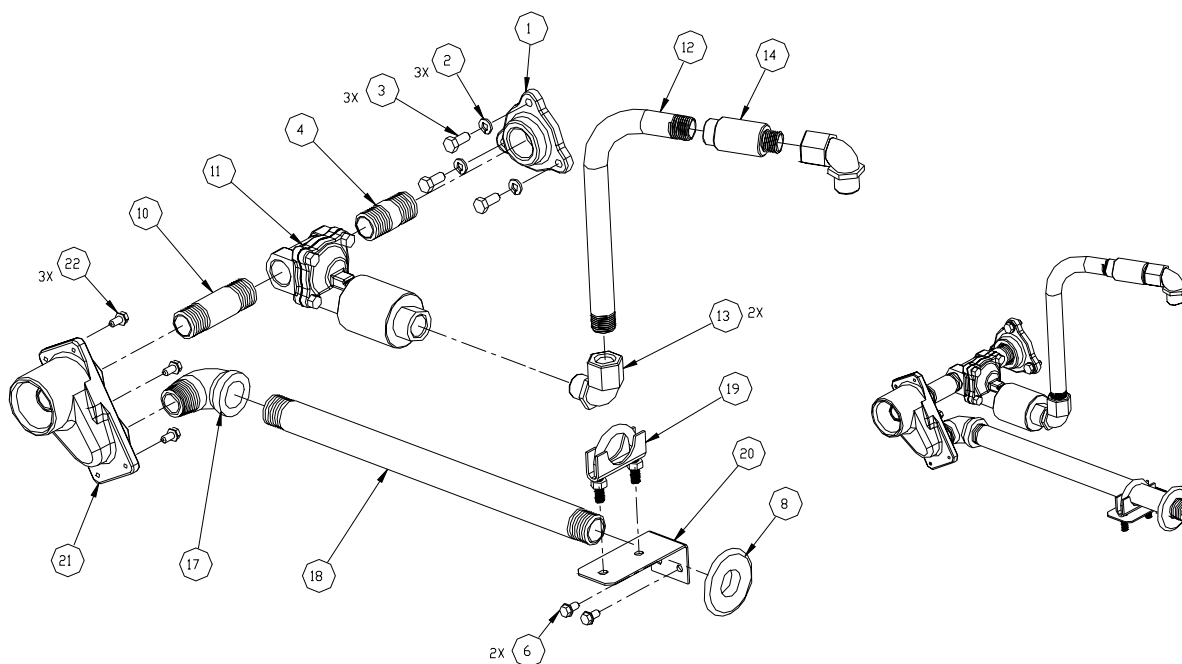
Item	Part No.	Description
1	003237	Flange
2	068875	Lockwasher, Std, Spring, 5/16
3	051895	Screw, 5/16-18 x 3/4, HHC
4	043977	Pipe, TBE, 3/4 x 3
6	053919	Screw, 1/4-20 x 1/2 HH TapTite
7	024955	Elbow, 3/4 x 90
8	028930	Grommet Discharge, 3/4"
9	003043	Adapter, Filter, 3/4"
10	043960	Pipe, TBE, 3/4 x 2
11	067054	Valve, 3/4" High Flow, 115V
12	023918	Conduit, Bent 3/4"
13	025045	Elbow, Conduit, 1/2 X 90
15	045121	Pipe, TOE, 3/4 x 11-5/8
17	024940	Elbow, Street 3/4 x 90
18	044111	Pipe, TBE, 3/4 x 7-3/4
19	013295	Bolt, U, 1-3/8 ID
20	022576	Bracket, U-Bolt Mounting
21	049980	Casting, Splitter VP Emco
22	051790	Screw, 1/4-20 x 1/2 HHC
23	066400	Explosion-Proof Conduit Union, 1/2" UNY
24	044137	Pipe, TBE, 3/4 x 4-1/4
25	044050	Pipe, TBE 3/4 x 5-1/4
26	022578	Bracket, Mounting, Split Cast VP
27	045120	Pipe, TOE, 3/4 x 4
28	024909	Elbow, Dresser, 3/4 x 90

Discharge, 9822Q, Solenoid Valve, 042796, 042797



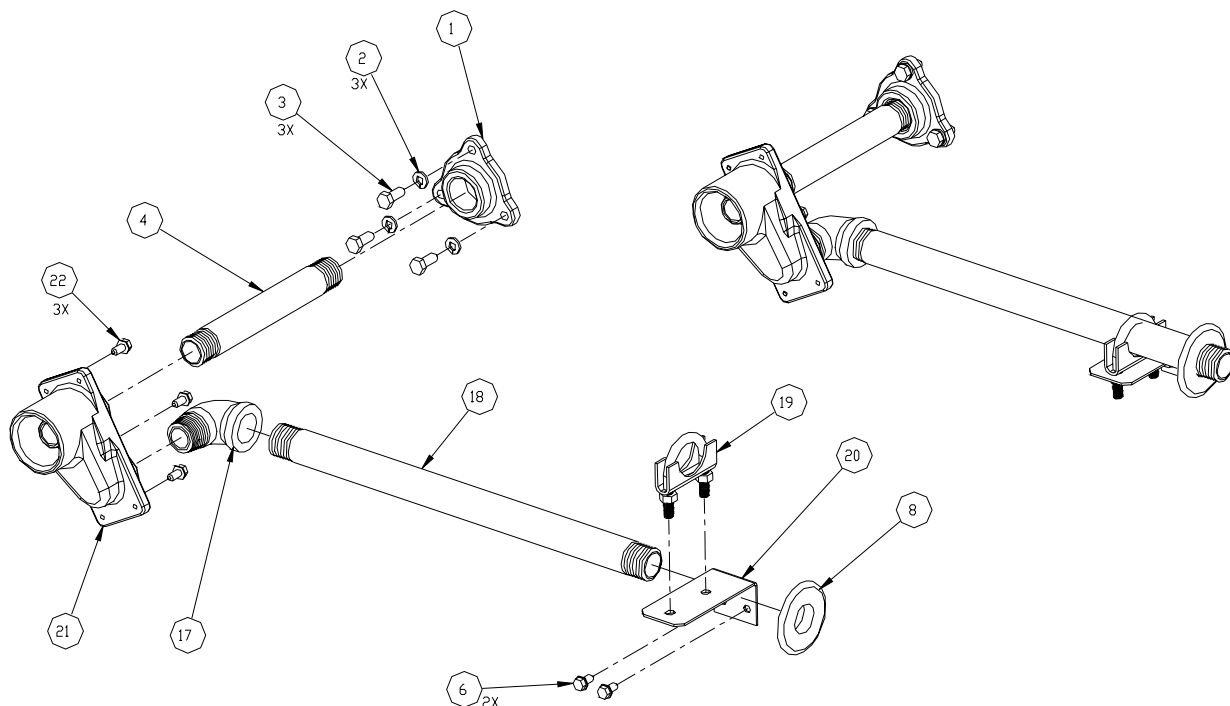
Item	Part No.	Description
1	003237	Flange
2	068875	Lockwasher, Std, Spring, 5/16
3	051895	Screw, 5/16-18 x 3/4, HHC
4	044476	Pipe, TBE, 3/4 x 2-1/4
5	015488	Bracket Discharge, 3/4 Pipe
6	053919	Screw, 1/4-20 x 1/2 HH TapTite
7	024955	Elbow, 3/4 x 90
8	028930	Grommet Discharge, 3/4"
10	044049	Pipe, TBE, 3/4 x 6-7/8
11	067054	Valve, 3/4 Hi Flow, 115V Thrd
12	023999	Conduit, Bent Valve, 3/4
13	025045	Elbow, Conduit, 1/2 X 90
23	066400	Explosion-Proof Conduit Union, 1/2" UNY

Discharge, 9822Q, Solenoid Valve, Vapor Recovery, 042703



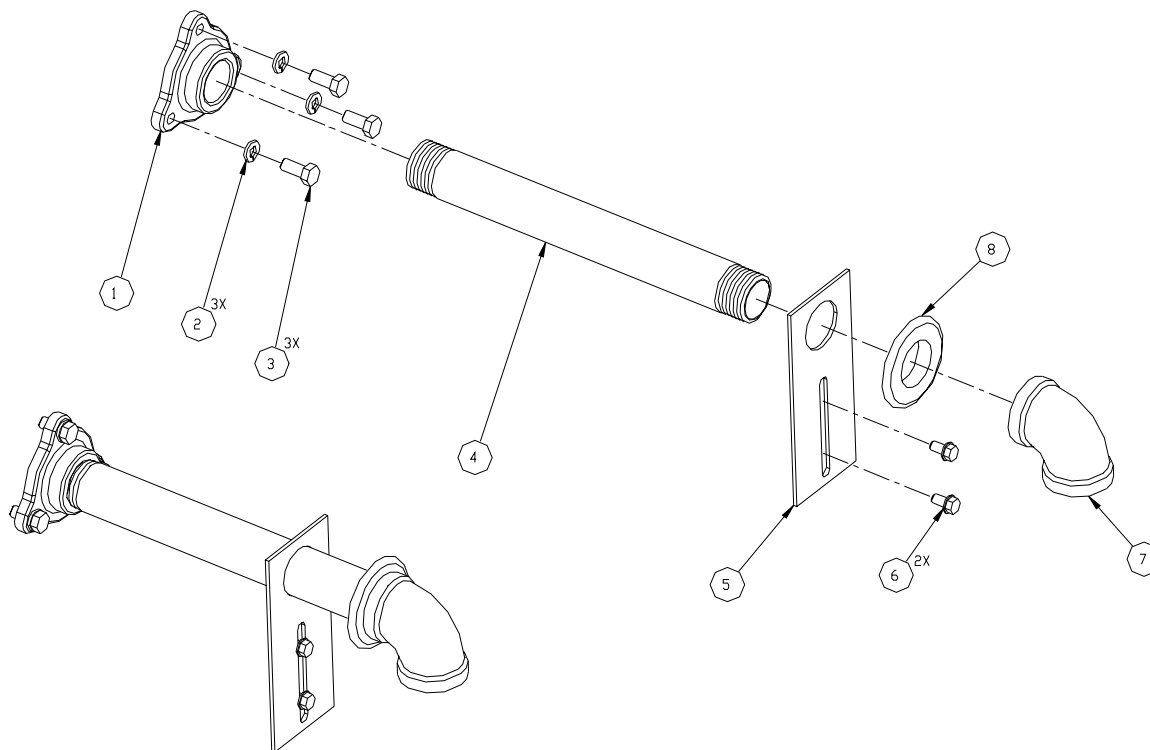
Item	Part No.	Description
1	003237	Flange
2	068875	Lockwasher, Std, Spring, 5/16
3	051895	Screw, 5/16-18 x 3/4, HHC
4	044476	Pipe, TBE, 3/4 x 2-1/4
6	053919	Screw, 1/4-20 x 1/2 HH TapTite
8	028930	Grommet Discharge, 3/4"
10	044135	Pipe, TBE, 3/4 x 3-3/8
11	067054	Valve, 3/4 Hi Flow, 115V Thrd
12	023999	Conduit, Bent Valve, 3/4
13	025045	Elbow, Conduit, 1/2 X 90
17	024940	Elbow, Street 3/4 x 90
18	044159	Pipe, TBE, 3/4 x 15-1/2
19	013295	Bolt, U, 1-3/8 ID
20	022576	Bracket, U-Bolt Mounting
21	049980	Casting, Splitter VP Emco
22	051790	Screw, 1/4-20 x 1/2 HHC
23	066400	Explosion-Proof Conduit Union, 1/2" UNY

Discharge, 9822Q, Vapor Recovery, 042701



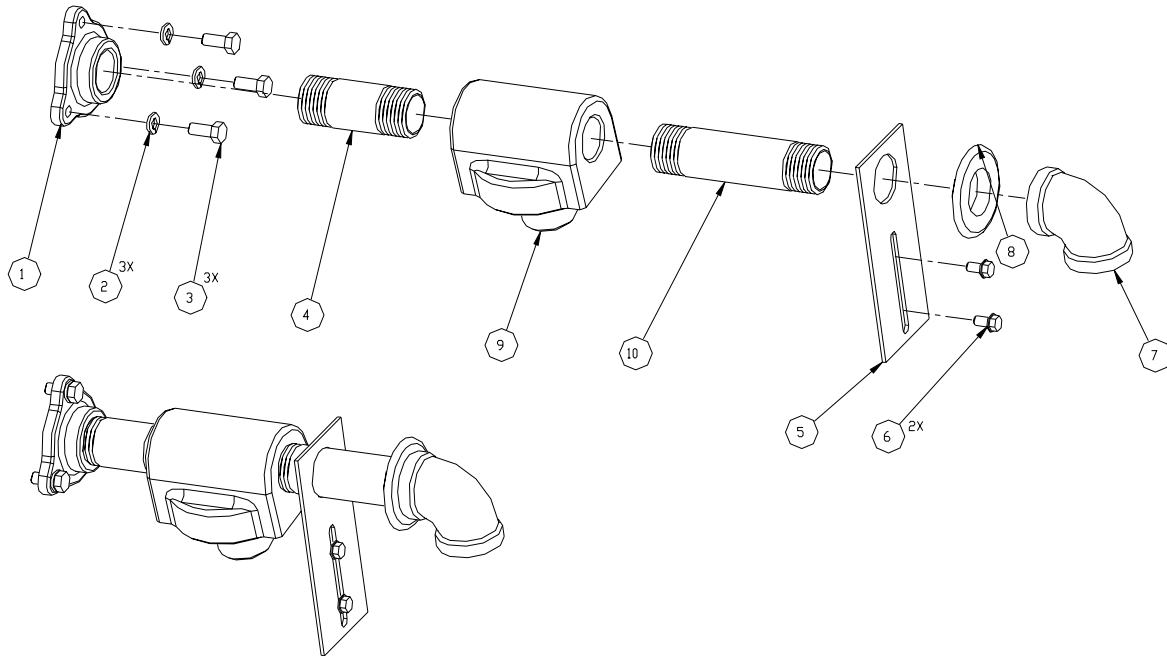
Item	Part No.	Description
1	003237	Flange
2	068875	Lockwasher, Std, Spring, 5/16
3	051895	Screw, 5/16-18 x 3/4, HHC
4	044116	Pipe, TBE 3/4 x 7/8
6	053919	Screw, 1/4-20 x 1/2 HH TapTite
8	028930	Grommet Discharge, 3/4"
17	024940	Elbow, Street 3/4 x 90
18	044159	Pipe, TBE, 3/4 x 15-1/2
19	013295	Bolt, U, 1-3/8 ID
20	022576	Bracket, U-Bolt Mounting
21	049980	Casting, Splitter VP Emco
22	051790	Screw, 1/4-20 x 1/2 HHC

Discharge, 9823Q, 042788



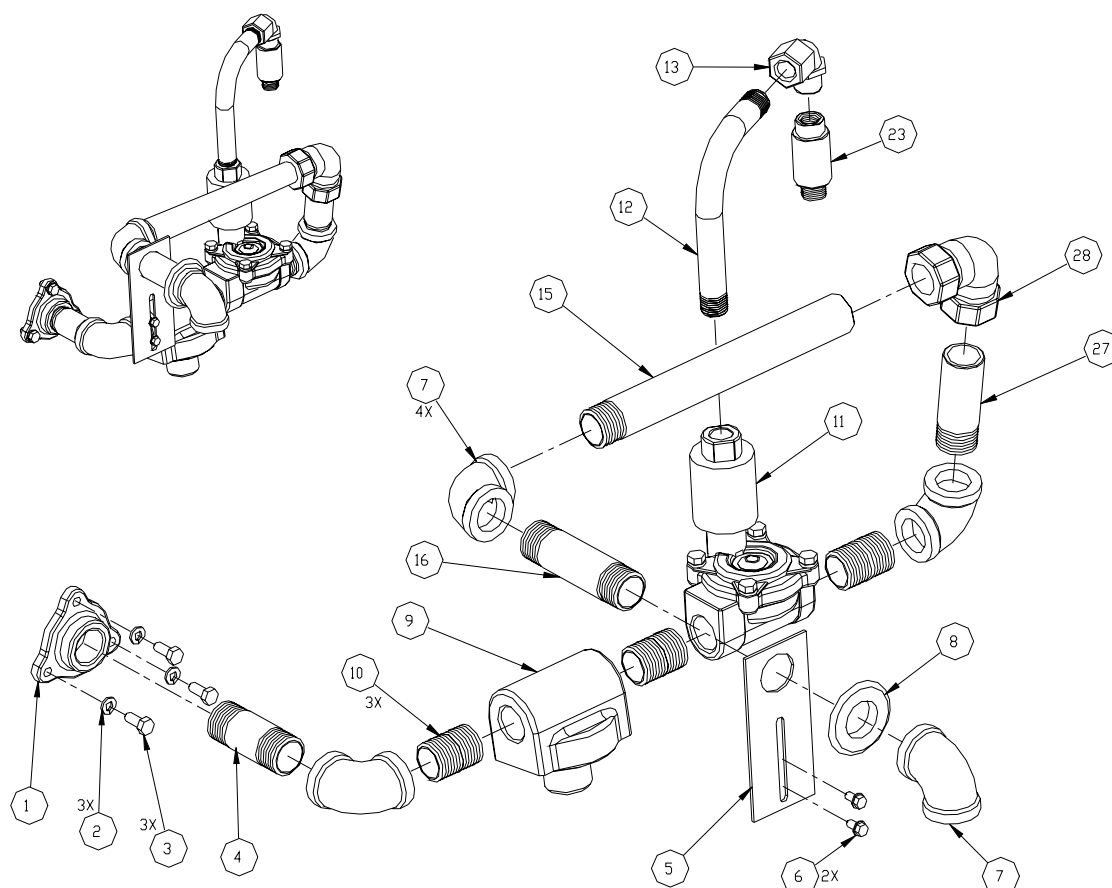
Item	Part No.	Description
1	003236	Flange
2	068875	Lockwasher, Std, Spring, 5/16
3	051895	Screw, 5/16-18 x 3/4, HHC
4	045327	Pipe, TBE, 1 x 10-3/4
5	015487	Bracket Discharge, 1" Pipe
6	053919	Screw, 1/4-20 x 1/2 HH TapTite
7	024895	Elbow, 1 x 90
8	028960	Grommet Discharge, 1"

Discharge, 9823Q, Filter 042791



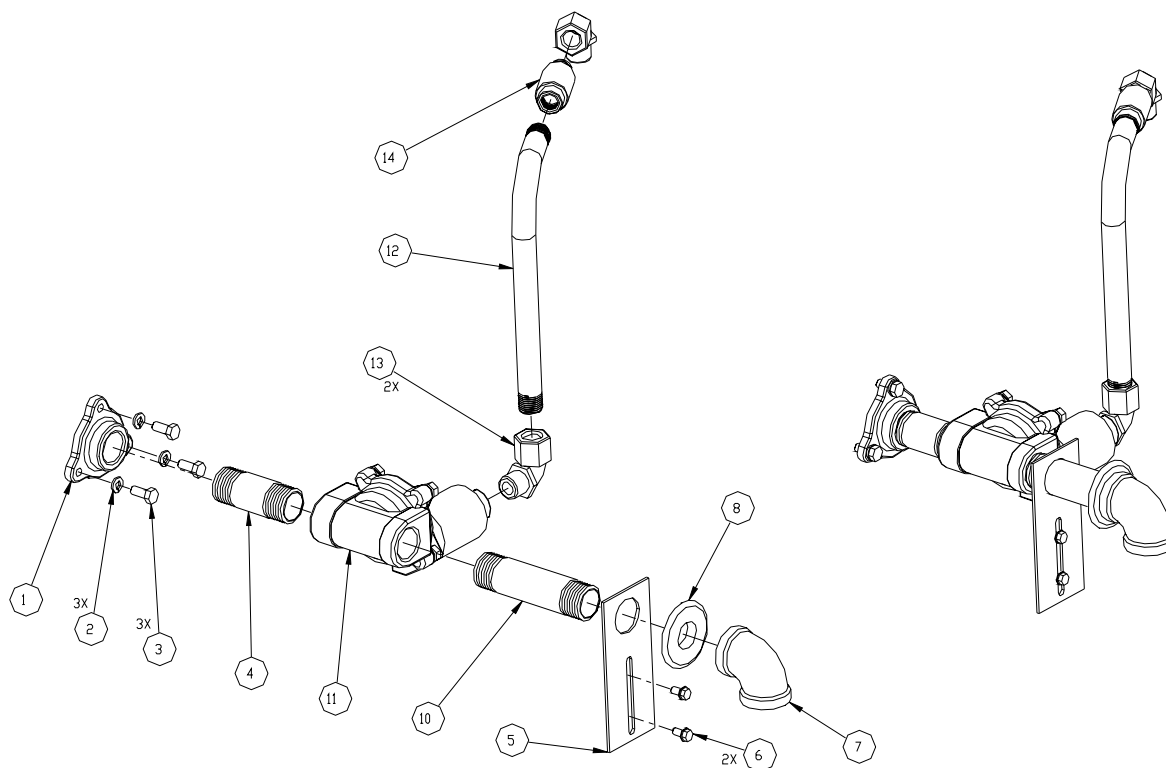
Item	Part No.	Description
1	003236	Flange
2	068875	Lockwasher, Std, Spring, 5/16
3	051895	Screw, 5/16-18 x 3/4, HHC
4	044545	Pipe, TBE, 1 x 10-3/4
5	015487	Bracket Discharge, 1" Pipe
6	053919	Screw, 1/4-20 x 1/2 HH TapTite
7	024895	Elbow, 1 x 90
8	028960	Grommet Discharge, 1"
9	003087	Adapter, 1" Cimtek 400 filter
10	044661	Pipe, TBE, 2 x 4-7/8

Discharge, 9823Q, Filter, Solenoid Valve 042794, 024795



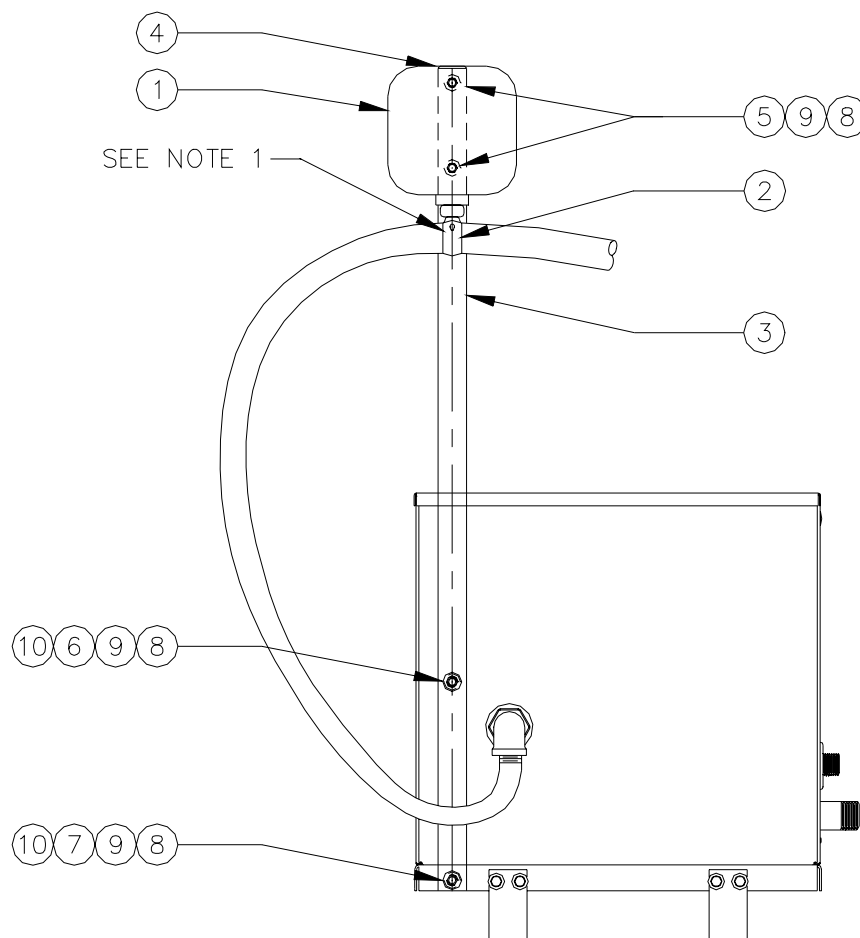
Item	Part No.	Description
1	003236	Flange
2	068875	Lockwasher, Std, Spring, 5/16
3	051895	Screw, 5/16-18 x 3/4, HHC
4	044545	Pipe, TBE, 1 x 10-3/4
5	015487	Bracket Discharge, 1" Pipe
6	053919	Screw, 1/4-20 x 1/2 HH TapTite
7	024895	Elbow, 1 x 90
8	028960	Grommet Discharge, 1"
9	003087	Adapter, 1" Cimtek 400 filter
10	044512	Pipe, TBE, 1 x 1-3/4
11	067034	VL Solenoid, 1" Skinner, 2 Stg to Cond, 115V
	067036	VL Solenoid, 1" Skinner, 2 Stg Top Cond, 230V
12	023963	Conduit, Bent 1" Valve
13	025045	Elbow, Conduit, 1/2 X 90
14	044560	Pipe, TBE, 1 x 4, 230V only
15	045342	Pipe, TOE, 1 x 10-1/4, 115V
	045327	Pipe, TBE, 1 x 10-3/4, 230V
16	044577	Pipe, TBE, 1 x 4-5/8
23	066400	Explosion-Proof Conduit Union, 1/2" UNY
27	045277	Pipe, TOE, 1 x 3-1/2, 115V only
28	024910	Elbow, Dresser, 115V only

Discharge, 9823Q, Solenoid Valve, 042798, 042799



Item	Part No.	Description
1	003236	Flange
2	068875	Lockwasher, Std, Spring, 5/16
3	051895	Screw, 5/16-18 x 3/4, HHC
4	044545	Pipe, TBE, 1 x 10-3/4
5	015487	Bracket Discharge, 1" Pipe
6	053919	Screw, 1/4-20 x 1/2 HH TapTite
7	024895	Elbow, 1 x 90
8	028960	Grommet Discharge, 1"
10	044661	Pipe, TBE, 1 x 3-1/4
11	067034	VL Solenoid, 1" Skinner, 2 Stg to Cond, 115V
	067036	VL Solenoid, 1" Skinner, 2 Stg Top Cond, 230V
12	023998	Conduit, Bent 1" Valve
13	025045	Elbow, Conduit, 1/2 X 90
23	066400	Explosion-Proof Conduit Union, 1/2" UNY

High Hose Retriever Option



NOTE 1: CLAMP SHOULD BE POSITIONED SO THAT HOSE DOES NOT TOUCH GROUND WHEN NOZZLE IS HUNG IN NOZZLE BOOT.

032666 Kit, HHR, 5/8" & 3/4" Hardwall/Softwall
 032667 Kit, HHR, 1" Softwall
 032668 Kit, HHR, 1" Hardwall (Std. 1-7/16 OD)

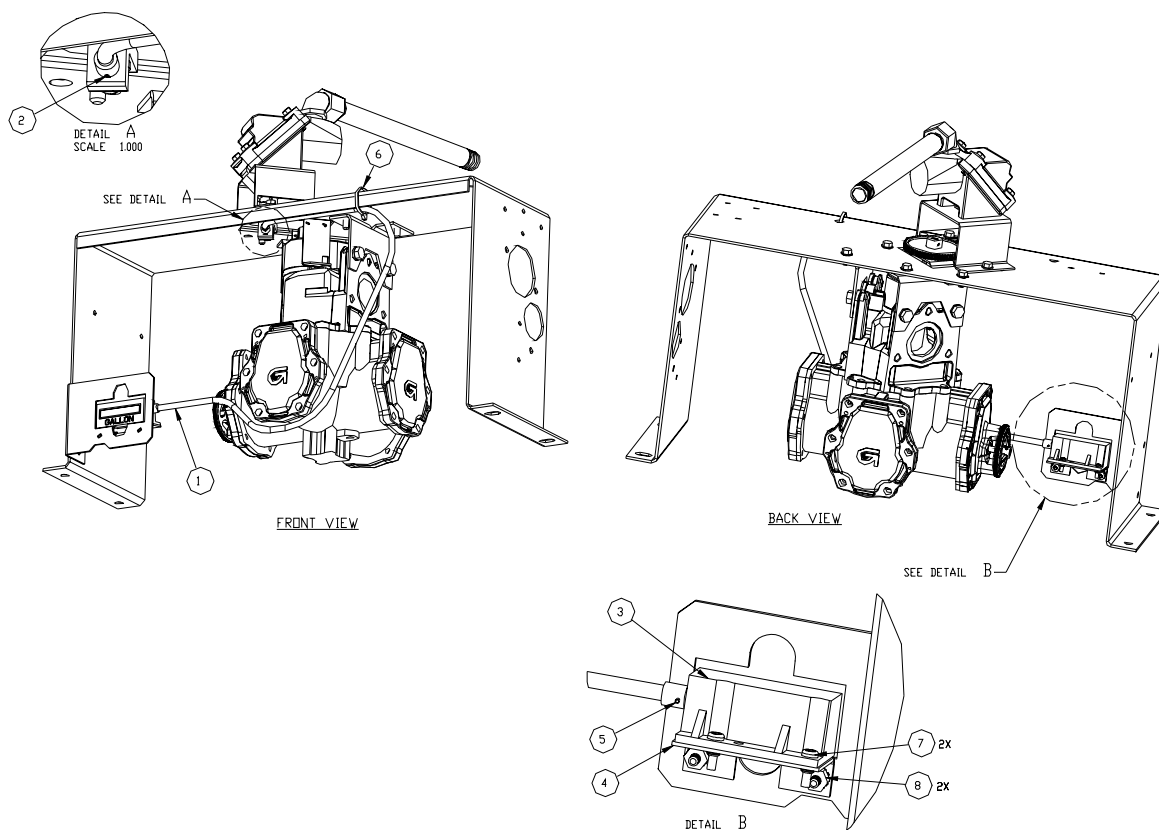
032669 Kit, HHR, 1" Hardwall (1-3/8 OD)
 032671 Kit, HHR, GY Prem Coax, Vapor Rec
 032670 Kit, HHR, 1-1/4" Softwall

Item	Part No.	Description
1	030804	Reel Assy, 5/8" & 3/4" Hardwall/Softwall
	030805	Reel Assy, 1" Softwall, 1" Hardwall; 1-1/4" Softwall; GY Prem Coax, Vapor Recovery
2	020714	Clamp, 5/8" & 3/4" Hardwall/Softwall
	020712	Clamp, 1" Softwall
	020718	Clamp, 1" Hardwall (Std. 1-7/16 OD)
	020719	Clamp, 1" Hardwall (1-3/8 OD)
	026732	Clamp, GY Prem Coax, Vapor Recovery
	020717	Clamp, 1-1/4" Softwall

Item	Part No.	Description
3	063995	Support Bar Assy.
4	017930	Caplug
5	051956	Bolt, 5/16-18 x 2, SS
6	051940	Bolt, 5/16-18 x 1-1/2
7	051821	Bolt, 5/16-18 x 3/4, SS
8	068080	Washer, 5/16 Pltd
9	068875	Lockwasher, 5/16 Pltd
10	047219	Plug Button, 7/8
11	057023	Spacer (See NOTE 2)

NOTE 2: Spacer should be positioned between discharge bracket and right side panel. Front door must be removed to do this.

Mechanical Totalizer Option



Item	Part No.	Description
1	017366	Drive Cable Assy., 9-Digit Totalizer
2	042290	Cotter Pin, 3/64 x 1/2
3	039824	Totalizer, 9-Digit, Gallon
	039825	Totalizer, 9-Digit, Liter
4	015113	Bracket, 9-Digit Totalizer Mount
5	043220	Spirol Pin, 1/16 x 1/2 SS
6	C08126	Tiewrap
7	C04039	Screw, #6-32-1/2 Phil Pn Hd
8	039070	Nut, #8-32 Keps

9820Q Series Kits and Accessories

Filter Kits and Replacement Elements

Filter Elements for 9822 with Internal Filter Option

- 026005 Standard (removes particulates only)
- 026042 Hydrosorb (removes water and particulates)
- 025909 Methanol (particulate removal in methanol and methanol blends where content exceeds 15%)

Filter Elements for 9823 with Internal Filter Option

- 026018 Standard (removes particulates only)
- 026019 Hydrosorb (removes water and particulates)
- 026284 Methanol (particulate removal in methanol and methanol blends where content exceeds 15%)

Filter Elements for External Filter Kits

- 025900 Standard (removes particulates only)
- 025901 Hydrosorb (removes water and particulates)
- 032754 External Single Element High Flow Kit (Includes adapter, one high flow element, and pipe fittings. A clearance of 14" below center line of discharge is required to allow room to mount assembly.)
- 032755 External Single Element High Flow Kit with Hydrosorb element (Same as above, except includes a high flow Hydrosorb element.)

Fuel Management System Interface Field Kits

(Provides communication between the 9820 and a Fuel Management system. See "Resistor Assembly", which may also be required.)

- C07057 Pulse Output Field Kit
- C07092 CFN RS485 Interface Field Kit

Heater Kits

(For field retrofit- Required for units with Battery Back-up ("B" option) when located in colder environments.)

- C06719 115V
- C06720 230V

High Hose Retriever Option

(Complete set-up requires a Support Post Kit **and** a Hose Clamp/Spring Reel Kit). Specify (1) 6' hose (for between the discharge and hose clamp) plus another hose length to equal desired total length. High Hose Reel is designed to handle a maximum of 15 ft. of hose.

- 032600 Support Post Kit (Includes support post, mounting hardware, and mounting instructions)

Hose Clamp/Spring Reel Kits for standard Gasboy hoses (Includes hose clamp and spring reel only.)

- 032659 Kit for 3/4" Hardwall or Softwall Hose (recomm'd for 1-1/32" O.D. hoses. Clamp is p/n 020722.)
- 032669 Kit for 1" Hardwall Hose (recomm'd for 1-3/8" O.D. hoses. Clamp is p/n 020719.)

Hose Clamp/Spring Reel Kits for other hoses (Includes hose clamp and spring reel only)

- 032666 Kit for 5/8" Hardwall or Softwall Hose (recomm'd for 1" O.D. hoses. Clamp is p/n 020714.)
- 032663 Kit for 3/4" Dayco Hardwall Hose (recomm'd for 1-1/8" O.D. hoses. Clamp is p/n 020721.)
- 032668 Kit for 1" Dayco Hardwall Hose (recomm'd for 1-7/16" O.D. hoses. Clamp is p/n 020718.)
- 032670 Kit for 1-1/4" Softwall Hose (for IRPCO 1-1/4" Style SW softwall hose. Clamp is p/n 020717.)
- 032671 Kit for Goodyear Premier Vapor Recovery Coaxial Hose (Clamp is p/n 026732.)

Mechanical Totalizer Field Kits

(Accumulative totalizer, viewable from the front of the hydraulic cabinet)

- 026326 Gallons (Contains 7 whole gallon digits, and one tenth gallon digit)
- 025327 Liters (Contains 8 whole liter digits)

Mounting Kits

- 042082 Pedestal Kit (Contains a stand-alone post and hardware, on which Remote Register may be mounted)
- 015127 Tank Mount Kit - Front (Contains brackets for the rear of the Remote Register, which allow it to be mounted to the front of the aboveground storage tank)
- 015128 Tank Mount Kit - Side (Contains brackets for the side of the Remote Register, which allow it to be mounted to the side of the aboveground storage tank)
- C35753 TopKAT Mounting Kit (Kit for mounting a TopKAT to the top of the Remote Register. Requires that the Remote Register is pedestal mounted.)

Resistor Assembly

(Required for AC authorization input when connected to external control devices using solid state relays.
Required for Gasboy Series 1000.)

- C05818 115V operation
- C06683 230V operation

Spare Parts Kits

- C06780 115VAC Electronic Spare Parts Kit (Spare parts kit for servicing up to 25 Remote Registers)
- C06781 230VAC Electronic Spare Parts Kit (Spare parts kit for servicing up to 25 Remote Registers)

Vapor Recovery Kits (Balanced System)

- 048519 Vapor Recovery Complete Kit (For use on a 9820A which is equipped for vapor recovery, such as a unit with either the "V" or "Y" base option. Includes nozzle, swivel, breakaway, and high hose retriever. Does not include hose.)
- 048533 Adapter Kit (Converts a Vapor Recovery pump to one which can use a standard 3/4" hose. Includes a coaxial-to-standard hose outlet adapter and o-rings.)
- 032629 Vapor Recovery Kit (Converts standard discharge assembly to a vapor recovery discharge assembly. Kit does not include high hose retriever, hose, nozzle, swivel, and breakaway.)

WARRANTY

General Statements:

Gasboy International LLC. warrants all new equipment manufactured by Gasboy against defective material and/or workmanship, for the warranty period specified below, when the equipment is installed in accordance with specifications prepared by Gasboy.

This warranty does not cover damage caused by accident, abuse, Acts of God, lack of surveillance of automatic recording systems, negligence, mis-application, faulty installation, improper or unauthorized maintenance, installation or use in violation of product manuals, instructions, or warnings. Under no circumstance shall Gasboy be liable for any indirect, special, or consequential damages, losses, or expenses to include, but not limited to, loss of product, loss of profits, litigation fees, or the use, or inability to use, our product for any for any purpose whatsoever.

Parts Only - During the warranty period, Gasboy will, at its option, repair or replace defective parts returned transportation prepaid to its factory.

On-Site Labor Included - Gasboy will also provide, within the Continental United States and during the warranty period, the services of an Authorized Service Representative (ASR) for on-site repair or replacement of defective parts.

Replacement Parts - Any system components that are not part of the original system order, including Island Card Readers, Pump Control Units, etc., are considered replacement parts.

Equipment	Term	Coverage
Commercial Pumps and Dispensers Full-Cabinet Consumer Pumps	One year from date of installation or 18 mos. from date of Gasboy International's invoice to the purchaser, whichever comes first.	Parts and Labor.
Small Transfer Pumps, Meters, Pressure Regulators	One year from date of installation or 18 mos. from date of Gasboy International's invoice to the purchaser, whichever comes first.- Excepting the Model 2020 Hand Pump, which has a 90-day warranty from date of GASBOY International's invoice.	Parts Only.
Keytrol	One year from date of installation or 18 mos. from date of Gasboy International's invoice to the purchaser, whichever comes first.	Parts and Labor.
Fuel Management Systems: - CFN/ Profit Point - Series 1000/Fleetkey - TopKAT - Fuel Point Readers (sold with new systems)	One year from date of start-up or 15 mos. from date of Gasboy International's invoice to the purchaser, whichever comes first.- The basic warranty only applies to systems which have been started up by a Gasboy Authorized Service Representative (ASR).	Parts and Labor.
Additional Fuel Point Items: - Fuel Point Readers sold for retrofitting existing systems. - Fuel Point vehicle and dispenser components.	One year from date of start-up or 15 mos. from date of Gasboy International's invoice to the purchaser, whichever comes first.	Parts Only.
Encoders, Embossers, Modems, CRTs, and Logger Printers	Purchased with Fuel Management System (Encoders, Embossers only): 90 days from the date of start-up by a Gasboy ASR, or 180 days from date of Gasboy International's invoice, whichever occurs first. Purchased with Fuel Management System (Modems, CRTs, and Logger Printers only): Matches system warranty. Purchased Separately: 90 days from date of Gasboy International's invoice to the purchaser.	Purchased with System (Encoders, Embossers only): Parts only. Purchased with System (Modems, CRTs, Logger Printers only): Matches system warranty. Purchased Separately: Parts Only.
Air Diaphragm Pumps	Three years from date of purchase (for full warranty description, see Price List).	Parts Only.
Items not manufactured by Gasboy (ex. automatic nozzles, hoses, swivels, etc.)	Not warranted by Gasboy International (consult original manufacturer's warranty).	Not Applicable.
Replacement Parts	One year from date of Gasboy International's invoice to the purchaser.	Parts Only.

To the extent permitted by law, this warranty is made in lieu of all other warranties, expressed or implied, including warranties of freedom from patent infringement, or merchantability, or fitness for a particular purpose, or arising from a course of dealing or usage of trade. No one is authorized to vary the terms of the warranty nor may anyone make any warranty of representation, or assume any liability other than that herein stated, in connection with the sale described herein. The acceptance of any order by Gasboy International is expressly made subject to the purchaser's agreement to these conditions.



GASBOY INTERNATIONAL LLC

P.O. Box 309, Lansdale, PA 19446 ● (800) 444-5579 ● FAX: (800) 444-5569 ● www.gasboy.com