

1-741510
1 of 1

SUCTION SYSTEM
(1248A-2-TW & 1250A-2-TW)

ITEM NO.	PART NO.	DESCRIPTION	ITEM NO.	PART NO.	DESCRIPTION	ITEM NO.	PART NO.	DESCRIPTION
1	1-126976	Cable (98" Long)	16	38-50361	5/16-18 X 1-3/4"	27	1-218950	Standard Duty
2	1-129618	Flange			Long Hex Head			Wix Filter
3	1-221899	Reel Bracket	17	66-50361	Cap Screw	1	1-226999	Water Alert Filter
4	1-224019	Coupling			5/16-18 X 1-1/4"		1-310011	Cap & Gasket
5	10-37852	"V" Belt			Long Hex Head			(Wix GFB Filter)
6	1-38082	Meter Transfer	18	296-50361	Cap Screw		1-311509	(Includes Item 26)
7	1-312061	Body Gasket			5/16-18 X 1-1/8"			Heavy Duty Wix
	1-312062	Manifold			Long Hex Head		1-318183	Filter
		Wix Filter Manifold			Cap Screw			Cap (1250A-2-TW)
		(Also On Canada)						(Canada)
8	6-313235	Gasket	19	03-50611	5/16 Plate Washer	28	01-51911	1/8-27 Square
9	13-313235	Gasket	20	08-50621	5/16 Plain Washer			Head Pipe Plug
10	1-312058	Meter Mounting	21	14-50641	5/16 Lockwasher			(1250A-2-TW
		Bracket						Canada Only)
11	19-318940	"O" Ring	22	35-54742	5/16-18 X 5/8"			(Used With Wix
12	2-406857	Meter Transfer			Long M-F Hex Hd.			Filter Manifold)
		Body			Whiz-Lock Screw			(Not Shown)
13	410796-11	Model 826A Cable	23	38-54742	5/16-18 Hex Nut			For complete Meter & Adapter
		Reel Assembly	24	02-54752	5/16-18 M-F			Assembly order:
14	1-411187	Meter & Motor			Flange Whiz-Lock			407282-51 1248A-2-TW &
		Mounting Bracket	25	1-125865	Nut			1250A-2-TW
15	35-50361	5/16-18 X 1" Lg	26	Gasket	Nipple			407282-53 1250A-2-TW
		Hex Hd. Cap Screw						(Canada)
					U.S.			
					1250A-2-TW			
					(Canada)			

1-741510

2 Rodent Traps

1-741509
1 of 1

MOTOR ASSEMBLY
(1248A-2-TW & 1250A-2-TW)

<u>ITEM NO.</u>	<u>PART NO.</u>	<u>DESCRIPTION</u>
1	1-114468	Cushion Grommet
2	1-114469	Cushion Washer
3	1-114470	Cushion Retainer
4	1-119636	Key
5	125369-1	Clamp Weld Assembly
6	2-221339	Motor Pulley
7	1-121413	Special Screw
8	1-214107	Conduit Connector
9	2-218591	Motor Support Rod
10	2-310300	Conduit Connector
11	1-218941	Expansion Union
12	<u>Motor</u>	
	1-38983	1/3 H.P. General Electric
	2-38983	1/3 H.P. A. O. Smith
	7-38983	1/3 H.P. Franklin Electric
13	1-312080	Motor Conduit
14	2-407915	Motor & Connection Box Support
15	01-50301	1/4-20 Hex. Nut
16	36-50361	5/16-18 X 1-1/4 Lg Hex Head Cap Screw
17	01-50611	3/16 Plate Washer
18	03-50611	5/16 Plate Washer
19	01-50710	1/2 X 1-1/8 Length Conduit Nipple
20	65-50721	5/16-18 X 1/4 Length Hex Socket Head Cup Point Set Screw
21	35-54742	5/16-18 X 5/8 Length M-F Hex Head Whiz-Lock Screw
22	02-54752	5/16-18 M-F Flange Whiz-Lock Nut

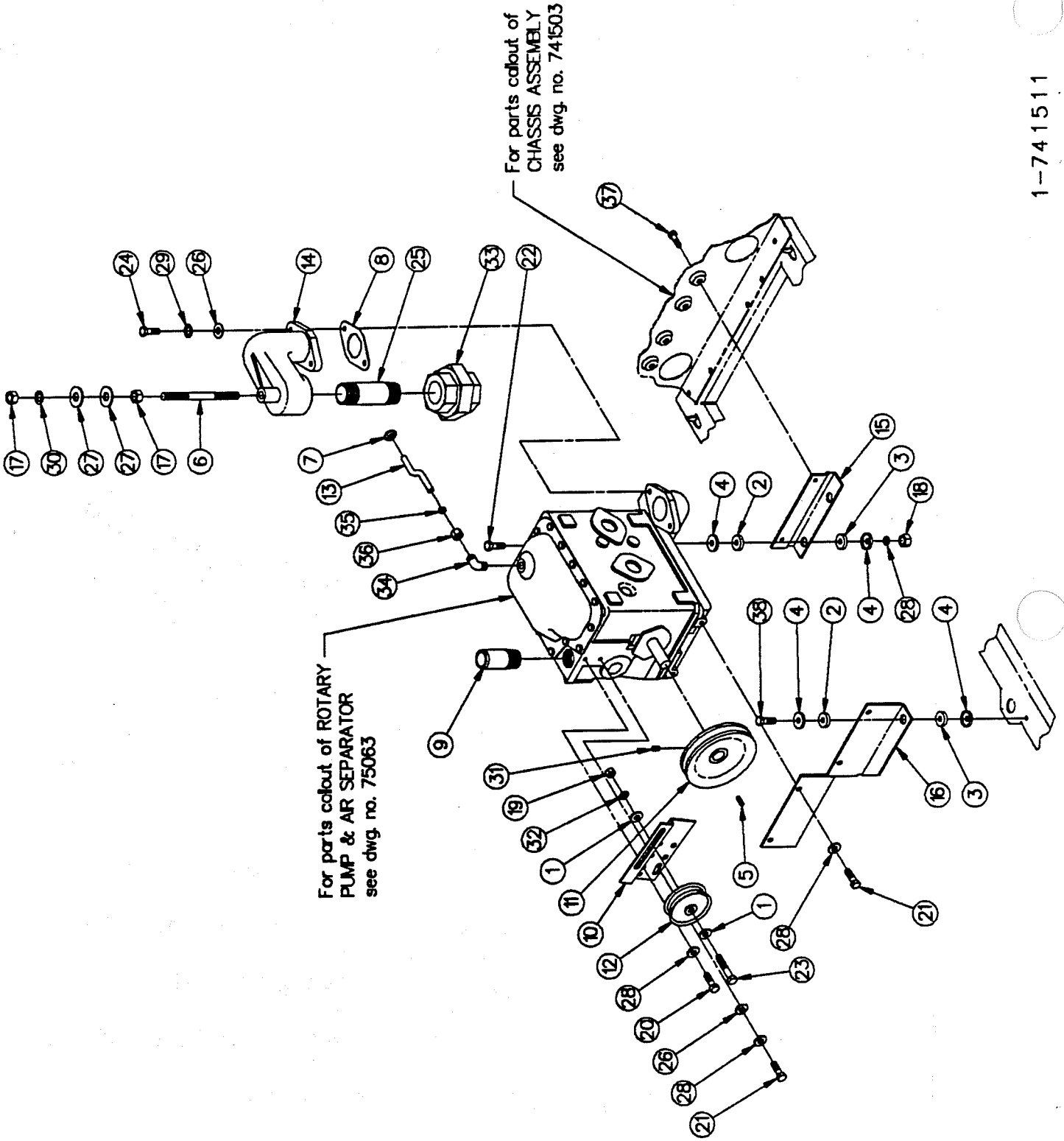
1-414316
All 3 sub to

For complete Motor Conduit Assembly order:

312081 1248A-2-TW & 1250A-2-TW

1-741509

ROTARY PUMP ASSEMBLY FOR 1248A-2-TW & 1250A-2-TW



1-741511
1 of 1

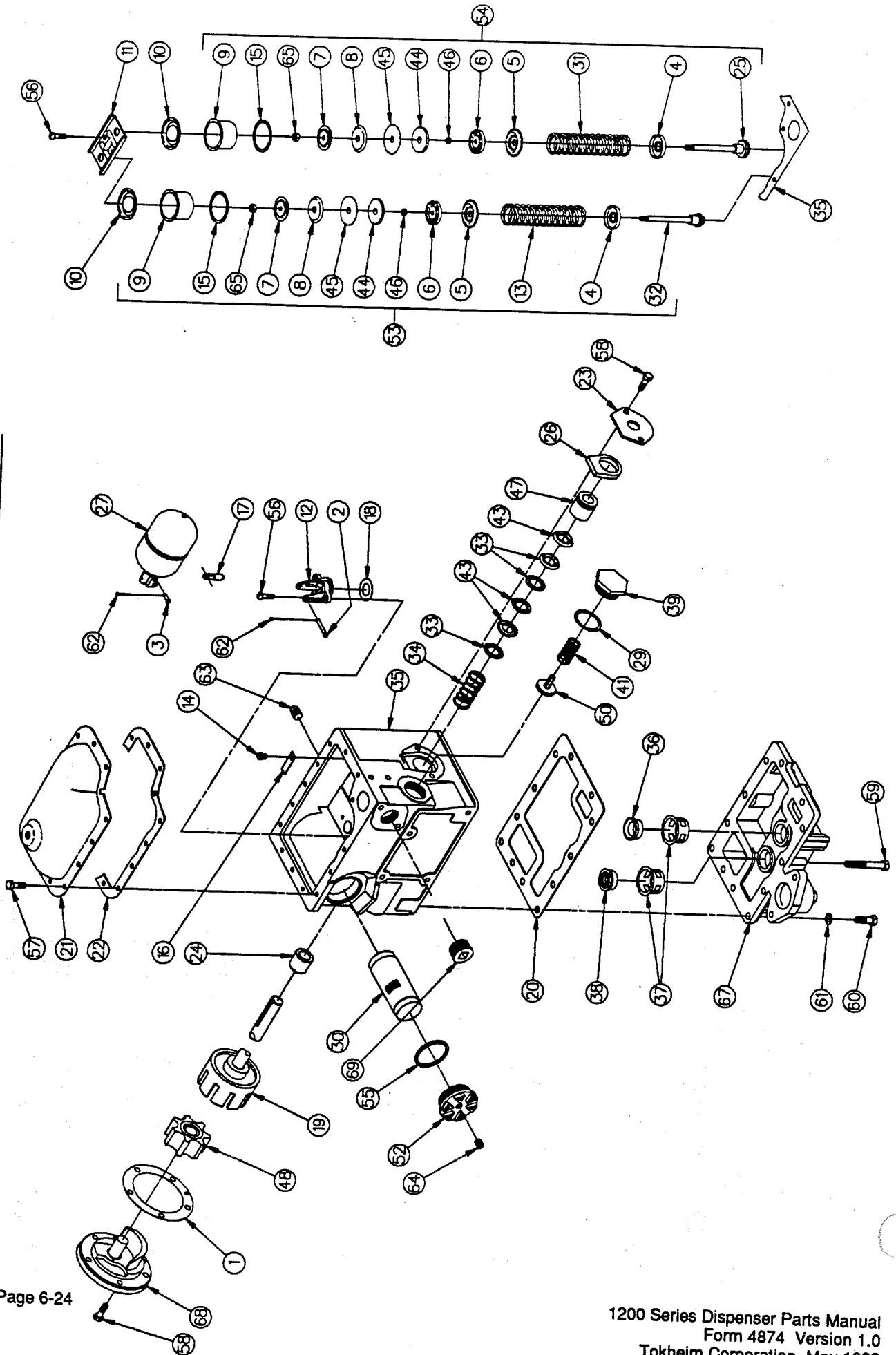
ROTARY PUMP ASSEMBLY (1248A-2-TW & 1250A-2-TW)

ITEM NO.	PART NO.	DESCRIPTION
25	123-50560	1-1/2 X 4-1/2 Length Pipe
26	03-50611	5/16 Plate Washer
27	06-50611	1/2 Plate Washer
28	14-50641	5/16 Lockwasher
29	15-50641	3/8 Lockwasher
30	17-50641	1/2 Lockwasher
31	65-50721	5/16-18 X 1/4 Lg Hex Socket Head Cup Point Set Screw
32	27-50761	3/8 Lockwasher
33	27-51780	1-1/2 Female Union
34	05-52020	Compression Elbow
35	05-52040	Compression Sleeve
36	14-52040	Compression Nut
37	35-54742	5/16-18 X 5/8 Length M-F Hex Head Whiz-Lock Screw
38	38-54742	5/16-18 X 1" Length M-F Hex Head Whiz-Lock Screw
For complete Rotary Pump Assembly order: 1248A-2-TW & 1250A-2-TW 407241-5		
For complete Idler Arm & Pulley Assembly order: 1248A-2-TW & 1250A-2-TW 37277-16		

1-741511

ITEM NO.	PART NO.	DESCRIPTION
1	2-13867	Washer
2	1-114468	Cushion Grommet
3	1-114469	Cushion Washer
4	1-114470	Cushion Retainer
5	1-119636	Key
6	1-124981	Suction Support Stud
7	1-127786	Grommet
8	1-217902	Pump Inlet Connection Gasket
9	4-220383	Coupling Nipple
10	1-220849	Idler Arm
11	2-221338	Pump Pulley
12	1-221668	Idler Pulley
13	2-224156	Vent Tube
14	1-38510	Pump Inlet Connection
15	1-312036	Pump Support Bracket
16	1-413442	Pump Support
17	05-50271	1/2-13 Hex Jam Nut
18	02-50301	5/16-18 Hex Nut
19	03-50301	3/8-16 Hex Nut
20	32-50361	5/16-18 X 5/8 Lg Hex Head Cap Screw
21	33-50361	5/16-18 X 3/4 Lg Hex Head Cap Screw
22	38-50361	5/16-18 X 1-3/4 Length Hex Head Cap Screw
23	67-50361	3/8-16 X 1-1/2 Length Hex Head Cap Screw
24	297-50361	3/8-16 X 1-1/8 Length Hex Head Cap Screw

ROTARY PUMP & AIR SEPARATOR



14-75067

14-75063

1 of 1

ROTARY PUMP & AIR SEPARATOR

ITEM NO.	PART NO.	DESCRIPTION	ITEM NO.	PART NO.	DESCRIPTION	ITEM NO.	PART NO.	DESCRIPTION
1	1-17526	Gasket	31	1-115642	Regulating Valve Spring	60	297-50360	3/8-16 X 1-1/8" Length Hex Head Cap Screw
2	1-18654	Float Lever Pin	32	1-116628	Bypass Valve Poppet	61	15-50641	3/8 Lockwasher (Model 855CC)
3	1-18655	Valve Pin	33	1-117475	Packing Gland	62	17-51210	1/16 X 1/2" Length Cotter Pin
4	1-18716	Guide Plate	34	1-117660	Packing Spring	63	02-51911	1/4" Square Head Pipe Plug
5	1-18717	Spring Plate	35	118335-1	Rotary Pump & Separator Body w/Gasket, Bearing, Screws & Spring	64	38-51911	1/4" Countersunk Pipe Plug
6	1-18718	Plunger Head	36	1-118590	Regulating Valve Seat	65	01-52321	1/4-28 Hex Nut
7	1-18719	Plunger Plate	37	1-118591	Valve Seat Guide	67	Lower Pump Head w/Valve Seat Guides, Regulating Valve Seat & Bypass Valve Seat	
8	1-18720	Plunger Follower	38	1-118640	Bypass Valve Seat		408143-1	Model 855-BB
9	1-18721	Valve Cylinder	39	1-120731	Check Valve Cap		408143-4	Model 855-DD
10	1-18722	Cylinder Head	41	1-120733	Poppet Spring		408143-2	Model 855-CC
11	1-18731	Clamp Plate	43	1-121394	"V" Packing		211818-1	Rotary Pump Head Assembly
12	1-18734	Float Valve Body	44	1-126295	Plunger Guide		27-51901	1" Pipe Plug (Model 855-CC)
13	Bypass Valve Springs #34 to 35-1/2" Spring (Model 855BB & 855CC)		45	1-126343	Plunger Disc		Order -	
	1-131178	44-1/2" Spring (Model 855DD & 855BB)	46	1-126344	Plunger Spacer		405952-39	for complete 855-BB Rotary Pump & Air Separator (Model 162 & 162-1-Twin, 1248A, 1248A & 1250A-1-Twin, 1248AS & 1250AS, 785, 785MC, 785-1-Twin, 262 & 262-1-Twin)
14	1-18750	Vent Screw	47	1-210024	Drive Shaft Bearing		405952-40	for complete 855-CC Rotary Pump & Air Separator (Model 162-2-Twin, 1248A & 1250A-2-Twin, 785-2-Twin & 262-2-Twin)
15	1-18792	Valve Cylinder Gasket	48	1-211816	Rotary Pump Idler		405952-42	for complete 855-DD Rotary Pump & Air Separator (Model 162-HC, 1248A-HS, 1250A-HS, 1248AS-HS, 1250AS-HS & 785-HC)
16	1-18799	Vent Screw Guard	50	213168-1	Poppet Disc. & Relief Valve Assembly		405952-43	for complete 855-BB Rotary Pump & Air Separator (Model 1248AS-HD & 1250AS-HD)
17	1-18860	Float Valve Needle	52	Suction Strainer Caps Model 855BB & 855DD				
18	1-18961	Float Valve Gasket		1-215030	Model 855BB & 855DD			
19	25664-1	Pump Rotor Shaft Assembly		2-215030	Model 855CC			
20	1-25879	Bottom Head Gasket	53	Bypass Valve Assemblies 34# to 35-1/2" Spring (Model 855BB & 855CC)				
21	1-32089	Separator Cover		217897-2	34# to 35-1/2" Spring (Model 855BB & 855CC)			
22	2-113691	Cover Gasket		217897-6	44-1/2" Spring (Model 855DD & 855CC)			
23	1-113698	Retainer		217898-2	Regulating Valve Assembly			
24	1-113703	Bearing		127-311105	Gasket			
25	113776-1	Regulating Poppet Assembly		401-50001	1/4-20 X 7/8" Lg Round Head Machine Screw			
26	1-113819	Oil Well Felt	54	01-50360	1/4-20 X 1/2" Length Hex Head Cap Screw			
27	114064-1	Float Assembly	55	34-50360	5/16-18 X 7/8" Length Hex Head Cap Screw			
29	1-114541	Gasket	58	72-50360	3/8-16 X 2-3/4" Length Hex Head Cap Screw			
30	Suction Screens		59					
	1-115075	Gasoline						
	2-115075	Diesel						

Section Seven

REMOTE CONTROL SYSTEM

1
2
0
0

Page Number

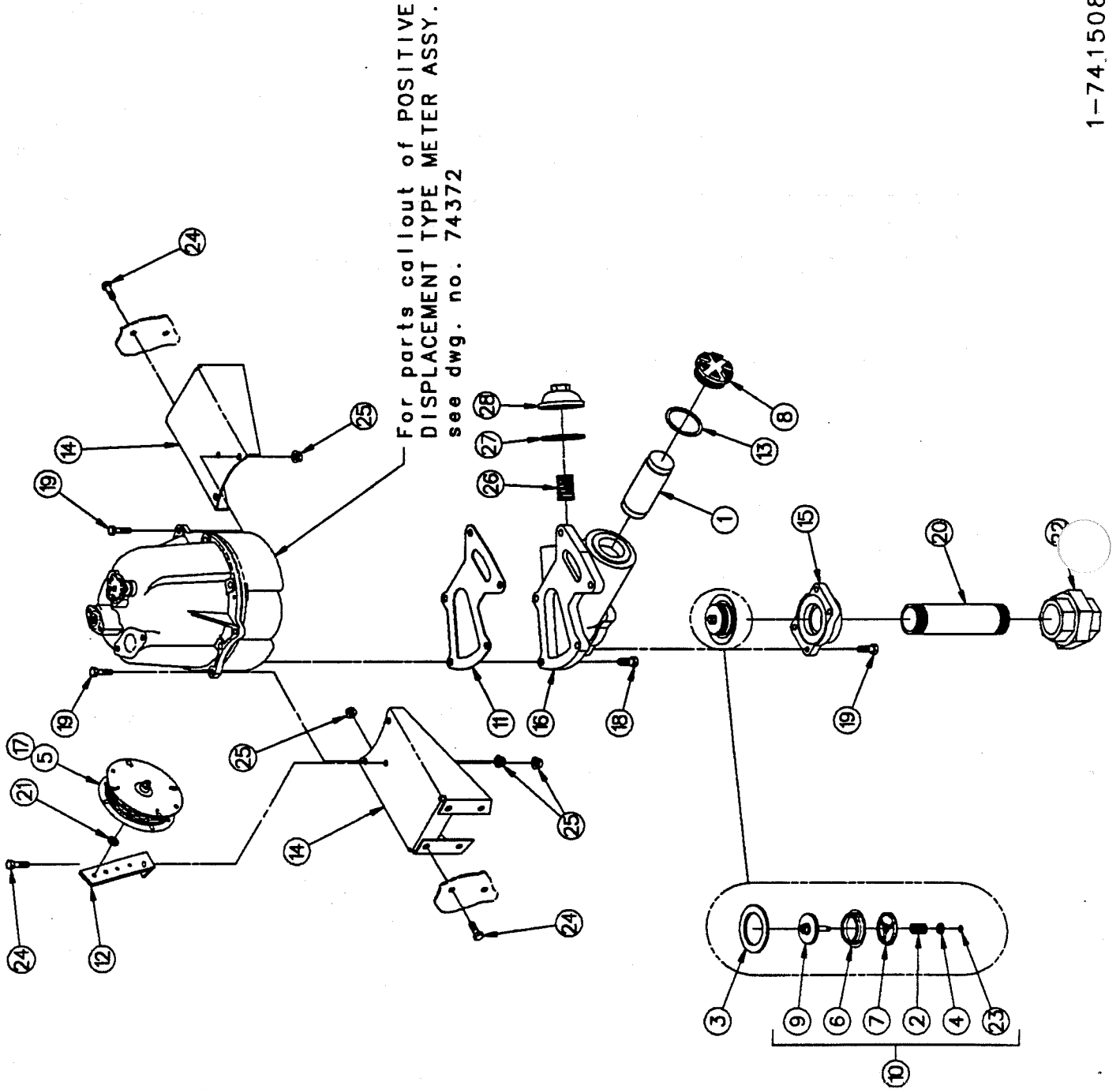
Remote Control System

1248A-RC, 1250A-RC.....	7-2, 7-3
1248AS-RC, 1250AS-RC	7-4, 7-5
1248A-RC-1 & 2-TW, 1250A-RC-1 & 2-TW	7-6, 7-7

S
E
R
I
E
S

D
I
S
P
E
N
S
E
R
S

REMOTE CONTROL SYSTEM FOR 1248A-RC & 1250A-RC

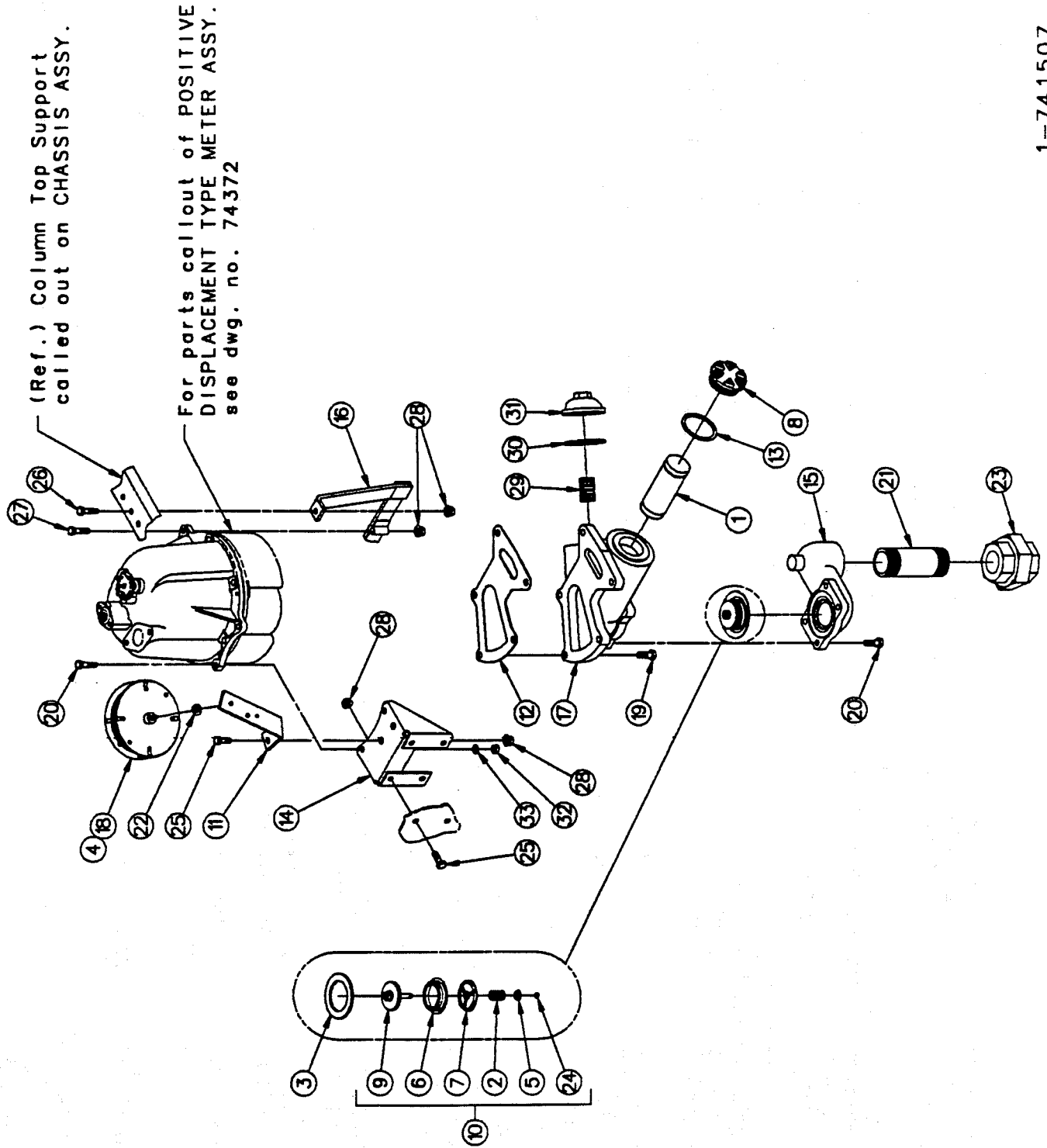


REMOTE CONTROL SYSTEM

(1248A-RC & 1250A-RC)

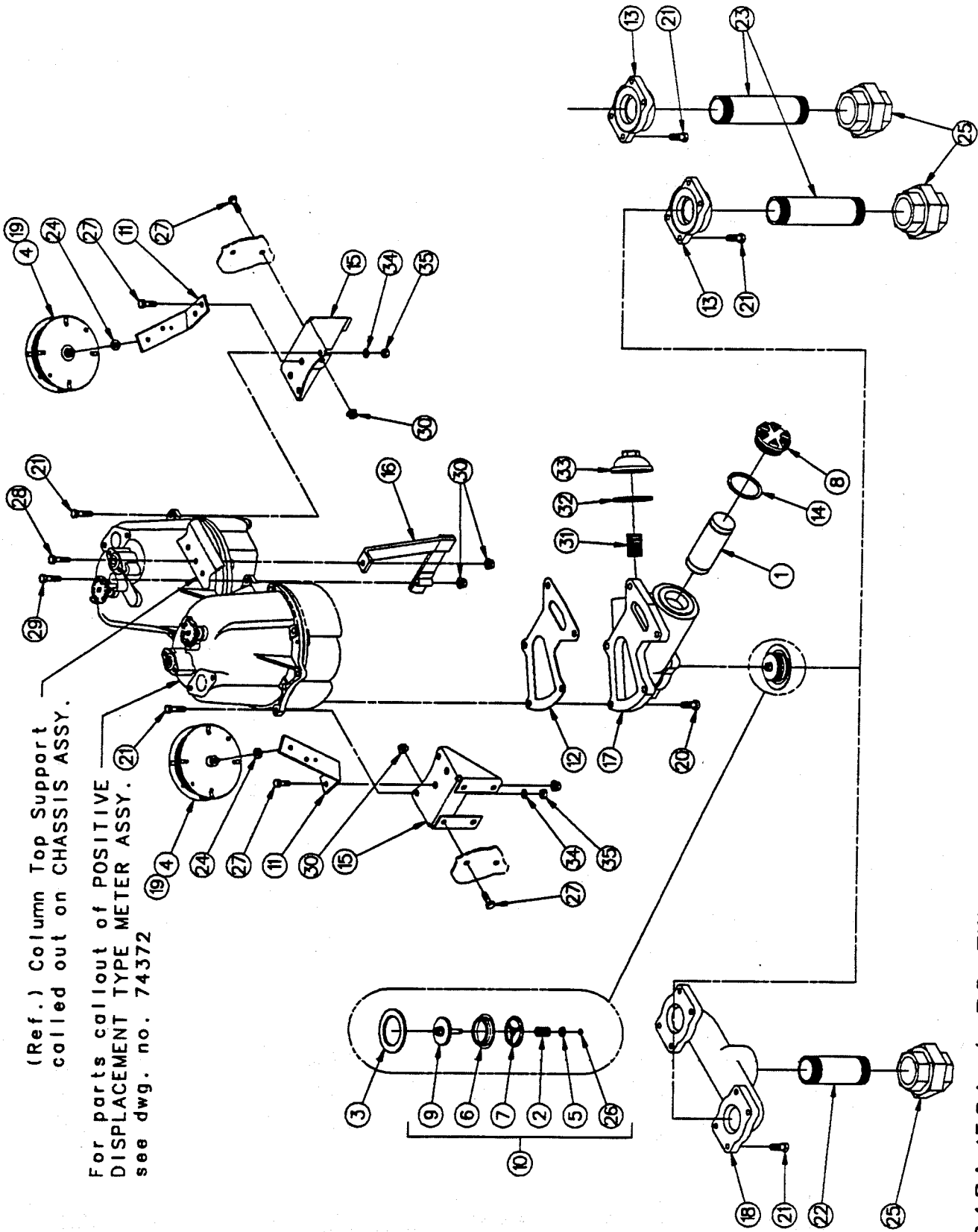
ITEM NO.	PART NO.	DESCRIPTION	ITEM NO.	PART NO.	DESCRIPTION
1	Suction Screen Complete 1-115075 2-115075	Gasoline Diesel	20	Pipe 127-50560 202-50510	1-1/2 X 7" Long (U.S.) 1-1/2 X 10-1/2" Lg (Canada)
2	1-121564	Poppet Spring	21	08-50621	5/16 Plain Washer
3	1-124296	Gasket	22	27-51780	1-1/2" Female Union
4	1-126871	Poppet Spring Washer	23	08-53270	Reliance Square Snap Ring (Closed)
5	4-126976	Cable (98" Long)			
6	2-212443	Valve Seat	24	35-54742	5/16-18 X 5/8" Lg M-F Hex Head Whiz-Lock Screw
7	1-212444	Poppet Guide	25	02-54752	5/16-18 M-F Flange
8	1-215030	Suction Strainer Cap	26	1-125865	Whiz-Lock Nut
9	216132-1	Valve Poppet Assembly	27	1-126134	Nipple
10	216133-1	Check Valve Assy. (Includes Items 2,4,6,7,9 & 23)			Gasket
11	1-38082	Meter Transfer Body Gasket	28	Filters	Standard Duty Wix Filter
12	1-311800	Reel Bracket		1-218950	Water Alert Filter
13	2-313255	Gasket		1-226999	Cap & Gasket (Wix GFB Filter) (Includes Item 27)
14	1-411234	Meter Support		1-310011	Heavy Duty Wix Filter
15	1-38101	Valve Housing		1-311509	
16	2-406787 1-411285	Strainer Body Wix Filter Strainer Body			
17	410796-1	Model 826A Cable Reel Assembly			
18	66-50361	3/8-16 X 1-1/4" Lg Hex Head Cap Screw			
19	296-50361	5/16-18 X 1-1/8" Long Hex Head Cap Screw			
					For complete Meter & Adapter Assembly order: 311335-13 1250A-RC (Canada) 311335-14 1248A-RC & 1250A-RC (U. S.)
					For complete Strainer Body Assembly order: 406956-6 1248AS-RC & 1250AS-RC

REMOTE CONTROL SYSTEM FOR 1248AS-RC & 1250AS-RC



1-741507

REMOTE CONTROL SYSTEM FOR 1248A/50A-1 & 2-RC-TW



(Ref.) Column Top Support called out on CHASSIS ASSY.

For parts callout of POSITIVE DISPLACEMENT TYPE METER ASSY. see dwg. no. 74372

1248A/50A-2-RC-TW

1248A/50A-1-RC-TW

1-7/06

