

# Mag Plus Probe

## Assembly Guide

# Notice

---

Veeder-Root makes no warranty of any kind with regard to this publication, including, but not limited to, the implied warranties of merchantability and fitness for a particular purpose.

Veeder-Root shall not be liable for errors contained herein or for incidental or consequential damages in connection with the furnishing, performance, or use of this publication.

Veeder-Root reserves the right to change system options or features, or the information contained in this publication.

This publication contains proprietary information which is protected by copyright. All rights reserved. No part of this publication may be photocopied, reproduced, or translated to another language without the prior written consent of Veeder-Root.

## **DAMAGE CLAIMS**

1. Thoroughly examine all components and units as soon as they are received. If damaged, write a complete and detailed description of the damage on the face of the freight bill. The carrier's agent *must* verify the inspection and sign the description.
2. Immediately notify the delivering carrier of damage or loss. This notification may be given either in person or by telephone. Written confirmation must be mailed within 48 hours. Railroads and motor carriers are reluctant to make adjustments for damaged merchandise unless inspected and reported promptly.
3. Risk of loss, or damage to merchandise remains with the buyer. It is the buyer's responsibility to file a claim with the carrier involved.

## **RETURN SHIPPING**

For the parts return procedure, please follow the appropriate instructions in the "General Returned Goods Policy" and "Parts Return" pages in the "Policies and Literature" section of the Veeder-Root **North American Environmental Products** price list.

**Introduction**

|   |   |
|---|---|
| Important .....                             | 1 |
| Contractor Certification Requirements ..... | 1 |
| Related Manuals .....                       | 1 |

**Mag Plus Probe Installation Kits**

|                         |   |
|-------------------------|---|
| Installation Kits ..... | 2 |
|-------------------------|---|

**Assembling Probe Components**

|  |   |
|--|---|
| Attaching Probe Canister Insulator Sleeves (2-Inch Risers) ..... | 4 |
| Attaching Probe Canister Spacer Rings (3- & 4-Inch Risers) ..... | 4 |
| Assembling Floats onto Probe Shaft .....                         | 6 |
| Attaching Cable Connector to Probe Canister .....                | 6 |

**Figures**

|  |   |
|--|---|
| Figure 1. Probe Installation Kit 846100-1XX, 846400-1XX and<br>846402-1XX Contents ..... | 2 |
| Figure 2. Probe Installation Kit 846400-3XX, -0XX and<br>846402-3XX, -0XX Contents ..... | 3 |
| Figure 3. Installing Probe Canister Insulator Sleeves .....                              | 4 |
| Figure 4. Installing Probe Canister Spacer Rings .....                                   | 5 |
| Figure 5. Probe float installation .....   | 6 |

**Tables**

|   |   |
|---|---|
| Table 1. Probe Installation Kit P/N 846100-1XX, 846400-1XX & 846402-1XX ..... | 2 |
| Table 2. Probe Installation Kit P/N 846400-3XX, -0XX & 846402-3XX, -0XX ..... | 3 |

## Introduction

This manual describes how to identify and assemble the components of the Mag Plus Probes. Instructions are included for assembling floats onto the probe's shaft, attaching spacer rings to the probe's canister, and attaching the probe's cable to the canister.

For guidelines on site preparation, instructions on installing the probe into a tank, and instructions on connecting wiring from the probe to the console, you must refer to the appropriate Veeder-Root Site Preparation and Installation manual.

### Important

---

Some of the installation kit components, such as epoxy packs, will be needed when installing the probe into the tank. Do not discard any unused parts.

Make a record of the float size installed on each probe. The installed float size will be required for each probe during system setup.

### Contractor Certification Requirements

---

Veeder-Root requires the following minimum training certifications for contractors who will install and setup the equipment discussed in this manual:

- Level 1** Contractors holding valid Level 1 Certification are approved to perform wiring and conduit routing, equipment mounting, probe and sensor installation, tank and line preparation, and line leak detector installation.
- Level 2/3** Contractors holding valid Level 2 or 3 Certifications are approved to perform installation checkout, startup, programming and operations training, troubleshooting and servicing for all Veeder-Root Tank Monitoring Systems, including Line Leak Detection and associated accessories.

**Warranty Registrations** may only be submitted by selected Distributors.

### Related Manuals

---

To install probe in tank, consult the appropriate Site Prep and Installation Manual for your console.

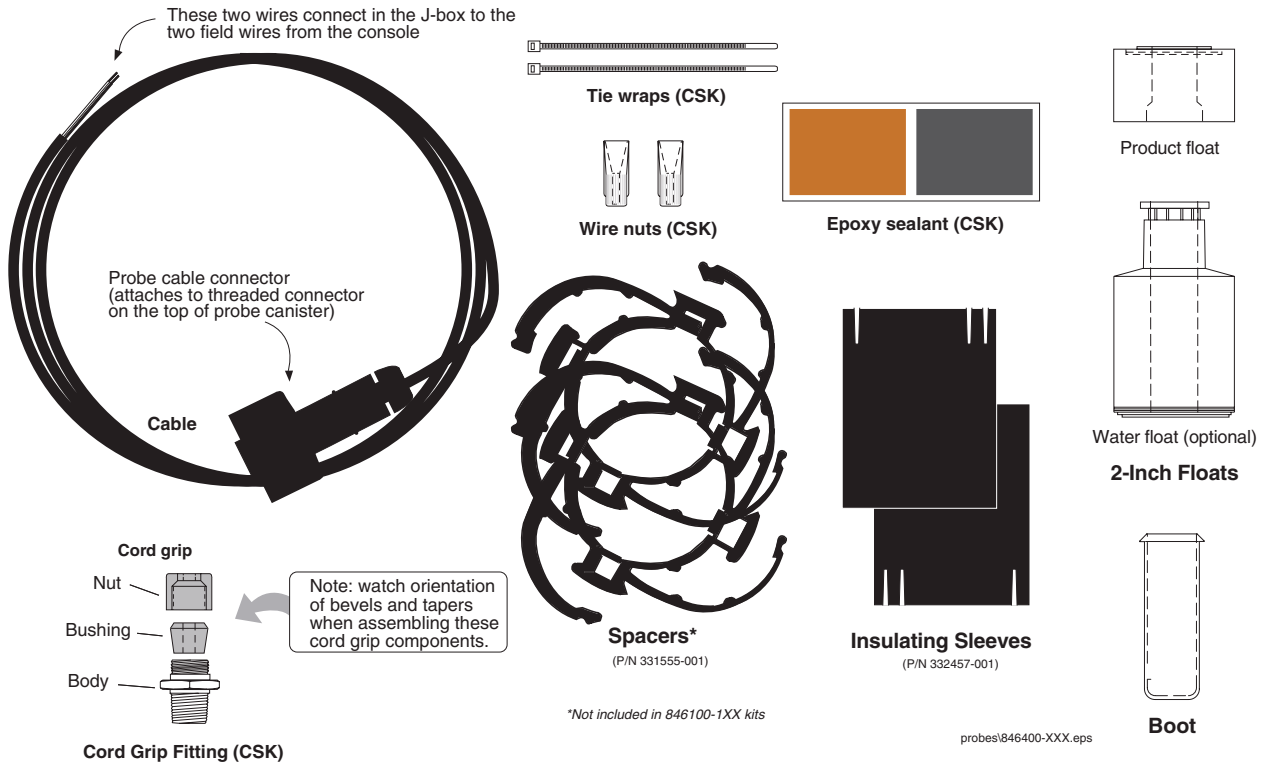
# Mag Plus Probe Installation Kits

## Installation Kits

Available probe installation kits are listed in Table 1 and Table 2..

**Table 1. Probe Installation Kit P/N 846100-1XX, 846400-1XX and 846402-1XX**

| Qty. | Description                        | Part Number                 |
|------|------------------------------------|-----------------------------|
| 1    | Cable, 5 feet long (standard size) | 330272-001                  |
| 1    | 2-inch Product Float               | 331627-001                  |
| 1    | 2-inch Water Float                 | 331582-00X                  |
| 1    | Boot                               | 331920-001                  |
| 2    | Canister Insulating Sleeves        | 332457-001                  |
| 1    | Cable Seal Kit (CSK)               | 330020-415 or<br>330020-067 |

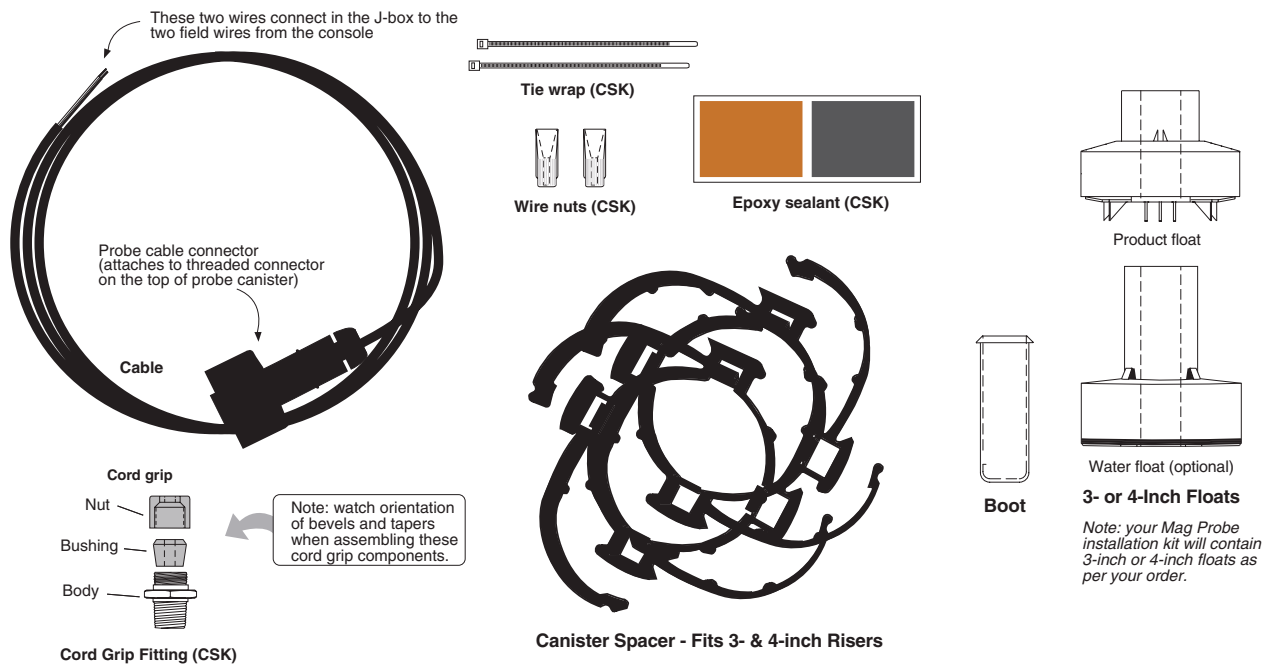


**Figure 1. Probe Installation Kit 846100-1XX, 846400-1XX and 846402-1XX Contents**

**Table 2. Probe Installation Kit P/N 846400-3XX, -0XX and 846402-3XX, -0XX**

| Qty. | Description                        | Part Number |
|------|------------------------------------|-------------|
| 1    | Cable, 5 feet long (standard size) | 330272-001  |
| 1    | 3-inch* Product Float              | 331759-001  |
| 1    | 3-inch* Water Float                | 331583-00X  |
| 1    | 4-inch* Product Float              | 331719-001  |
| 1    | 4-inch* Water Float                | 331718-00X  |
| 1    | Boot                               | 331920-001  |
| 2    | Canister Spacer Ring               | 331555-001  |
| 1    | Cable Seal Kit (CSK)               | 330020-067  |

\*Note: Depending on your order, this kit is shipped with either 3- or 4-inch floats.



probes\846400-3XX.eps

**Figure 2. Probe Installation Kit 846400-3XX, -0XX and 846402-3XX, -0XX Contents**

## Assembling Probe Components

### Attaching Probe Canister Insulator Sleeves (2-Inch Risers)

1. Open the Probe shipping carton so that you have access to the probe. Also open the installation kit.
2. Install the two canister sleeves onto the probe canister as shown in Figure 3.

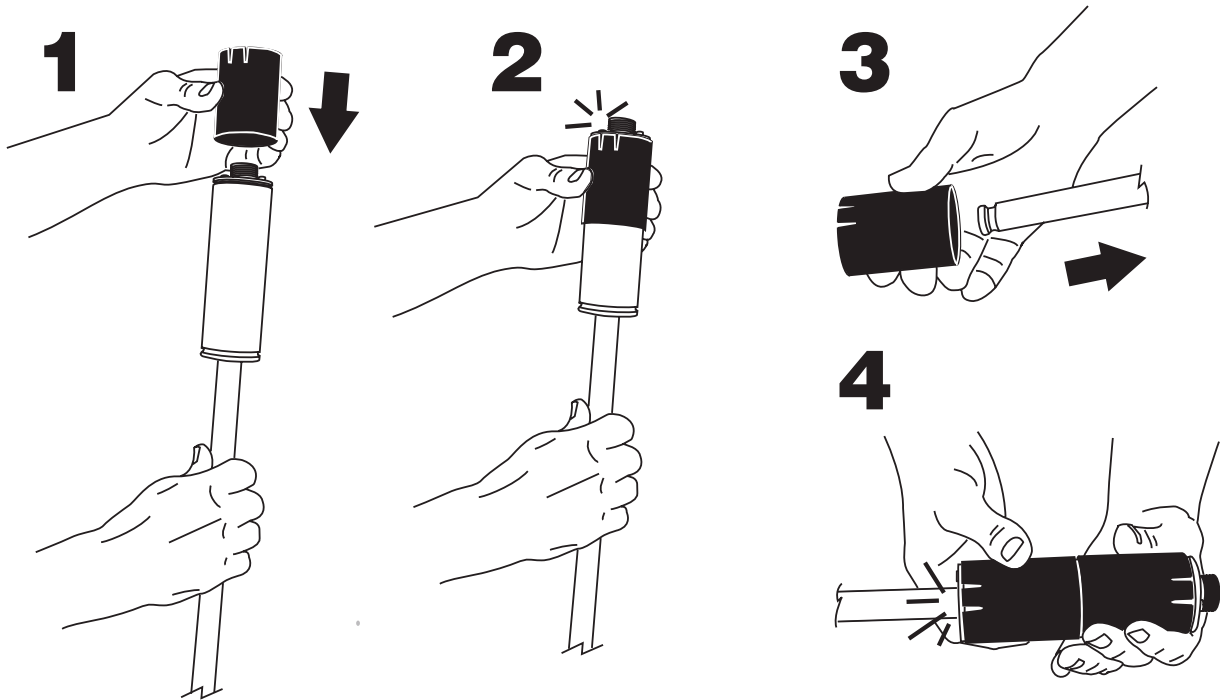


Figure 3. Installing Probe Canister Insulator Sleeves

### Attaching Probe Canister Spacer Rings (3- & 4-Inch Risers)

1. Open the Probe shipping carton so that you have access to the probe. Open the installation kit.
2. Set the spacer vanes for a 3- or 4-inch riser (see Figure 4) as required. Install the two spacer rings onto the probe canister as shown in the figure below. Note: you must slide the bottom spacer over the probe and onto the lower end of the canister.

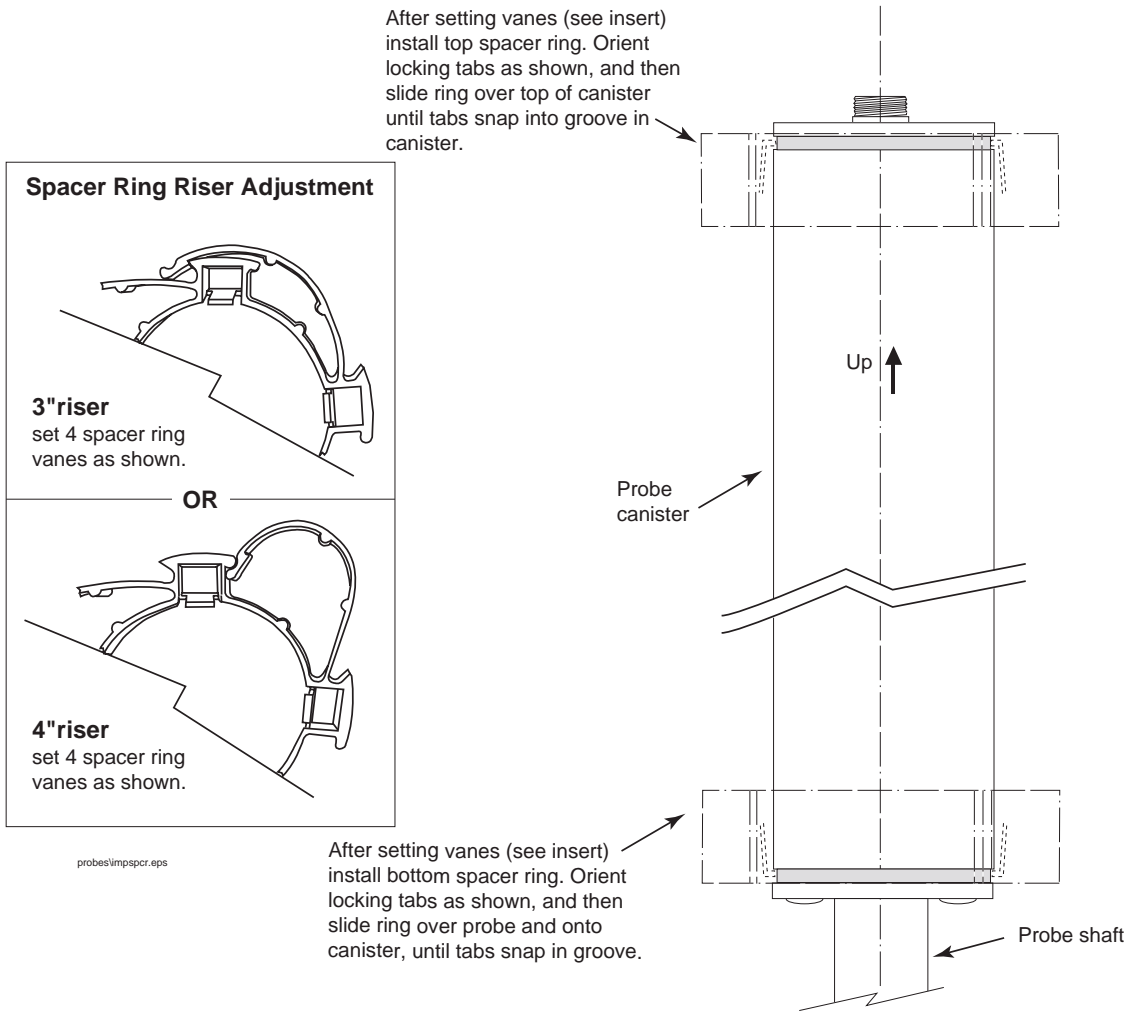


Figure 4. Installing Probe Canister Spacer Rings



## Assembling Floats onto Probe Shaft

The Product floats, Water Floats (if ordered), and Boots from Probe Installation Kits are assembled on the probe shafts in the exact sequence and orientation shown in Figure 5.

**IMPORTANT!** Failure to push the boot as far as possible onto the probe shaft could cause the boot and float(s) to fall into the tank. The boot must be pushed on until it “locks” on the probe shaft. Also, water floats must be installed, if ordered, for the probe to operate correctly.

Handle the probe carefully. Striking or dropping the probe will result in loss of calibration and could cause permanent damage.

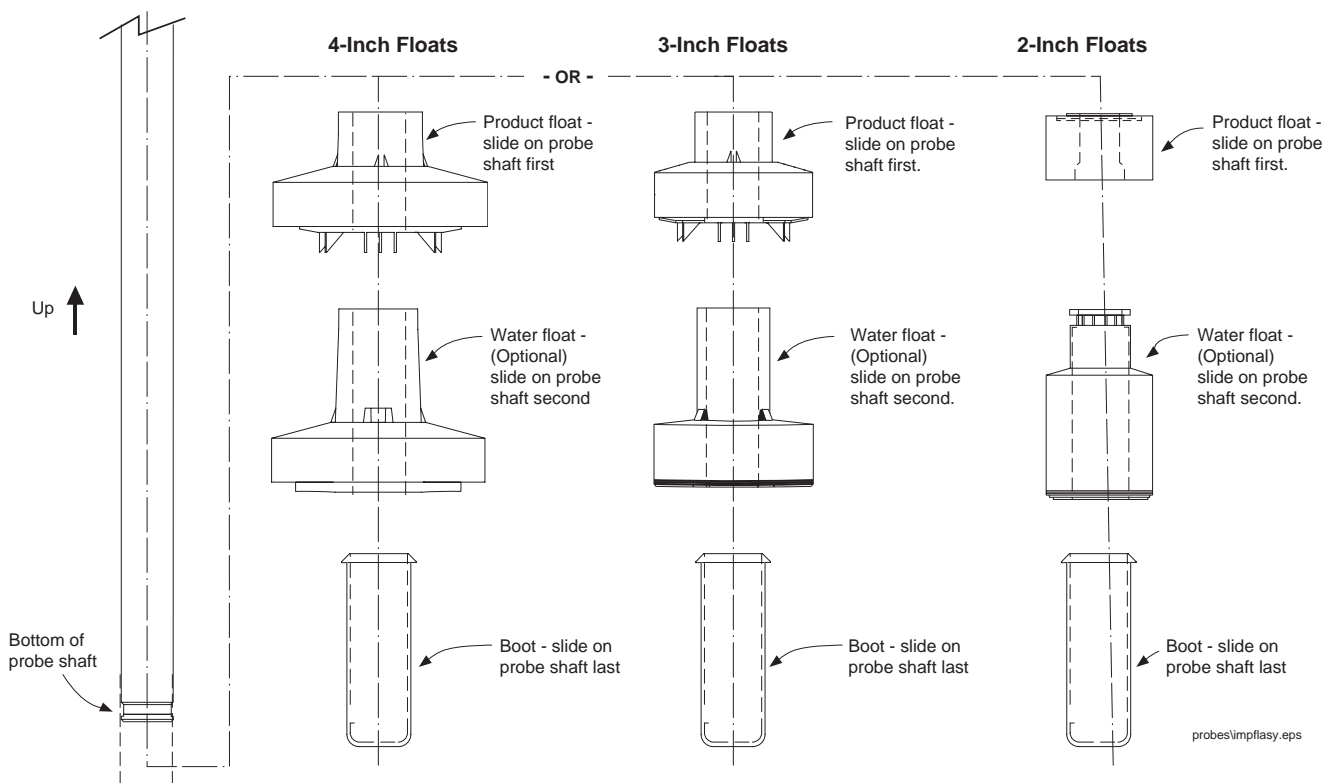


Figure 5. Probe float installation

## Attaching Cable Connector to Probe Canister

Attach the connector end of the probe cable to the threaded connector on top of the probe canister and tighten down the integral nut.

This completes the probe assembly. Save the remaining kit components. They will be needed to install the probe into the tank. Reference the appropriate Site Prep and Installation Manual for your console.



For technical support, sales or  
other assistance, please visit:  
[www.veeder.com](http://www.veeder.com)

A blue rectangular box containing a white globe icon at the top and contact information for technical support, sales, and assistance below it.